

Centre for Policy Studies
Conference 2014
Coping with Recession – A Regional Perspective

After the Gold Rush

Changes to the National & Regional Economies
of Ireland since the Downturn

Steve MacFeely

Centre for Policy Studies, UCC



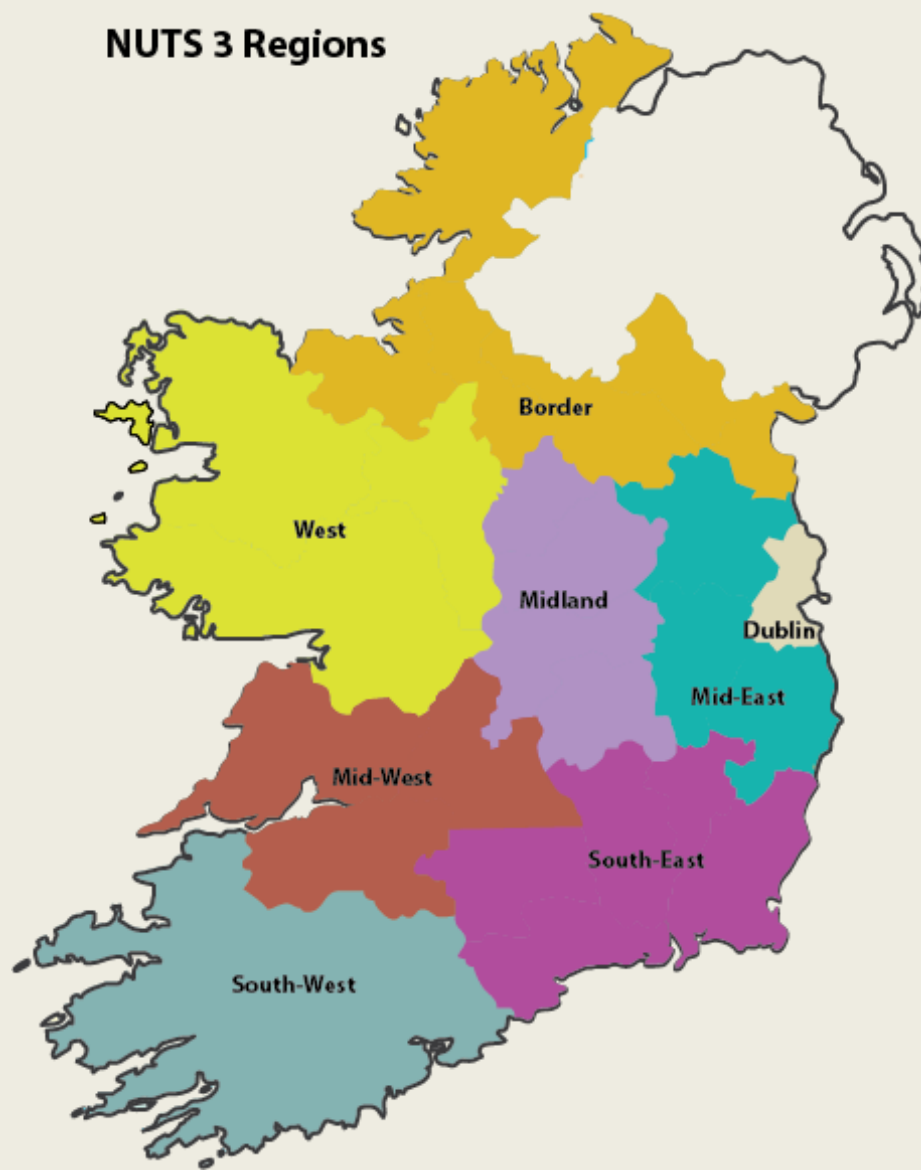
NUTS Regions in Ireland



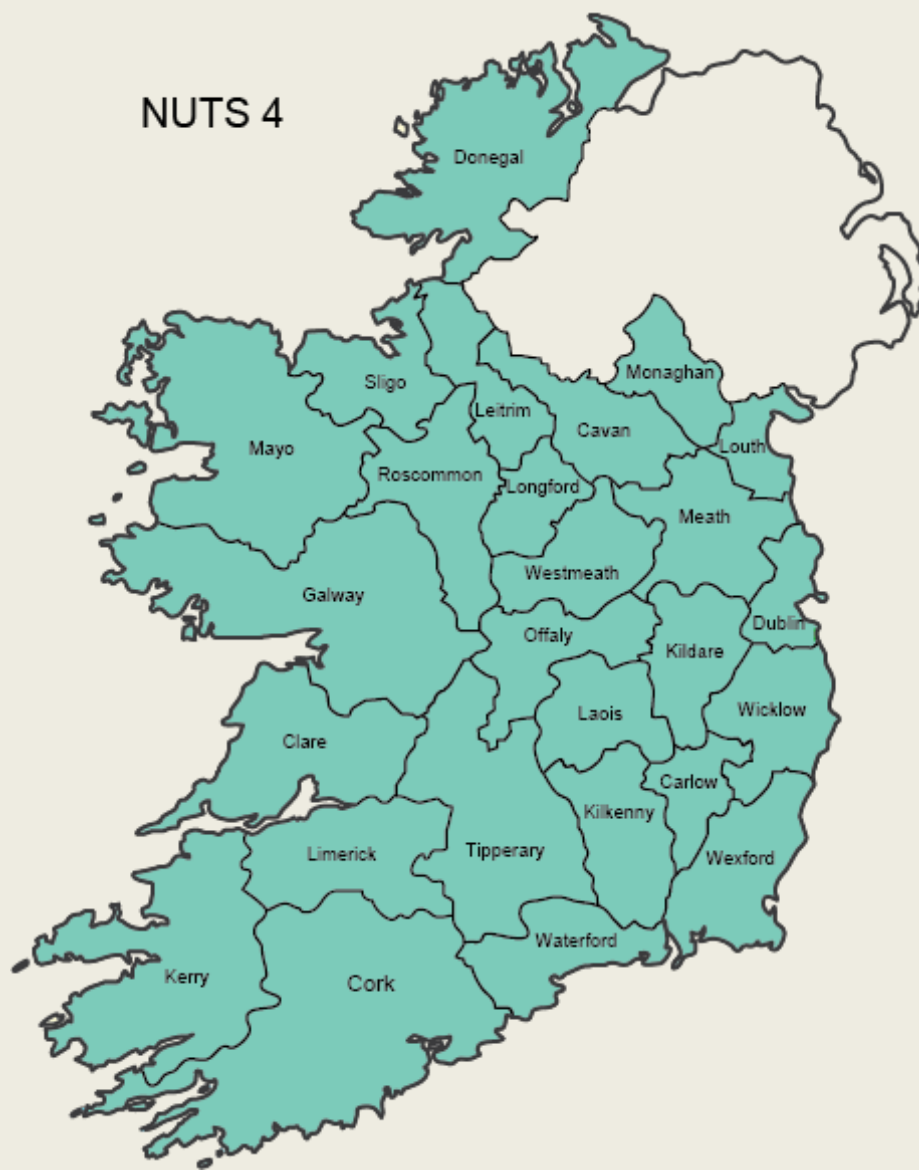
NUTS Regions in Ireland



NUTS Regions in Ireland



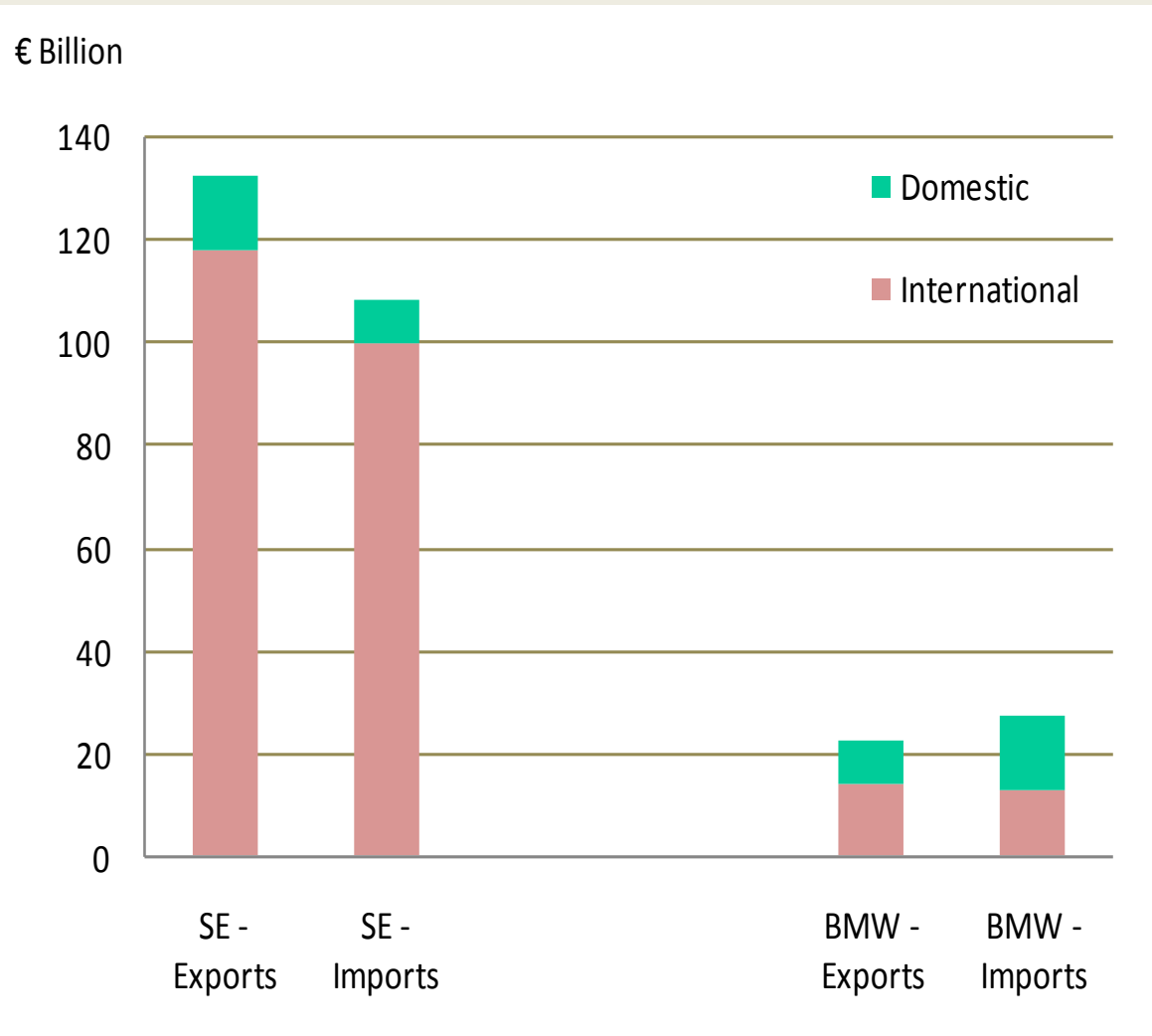
NUTS Regions in Ireland



Before

Trade

Total Imports and Exports, S&E and BMW Regions, 2005



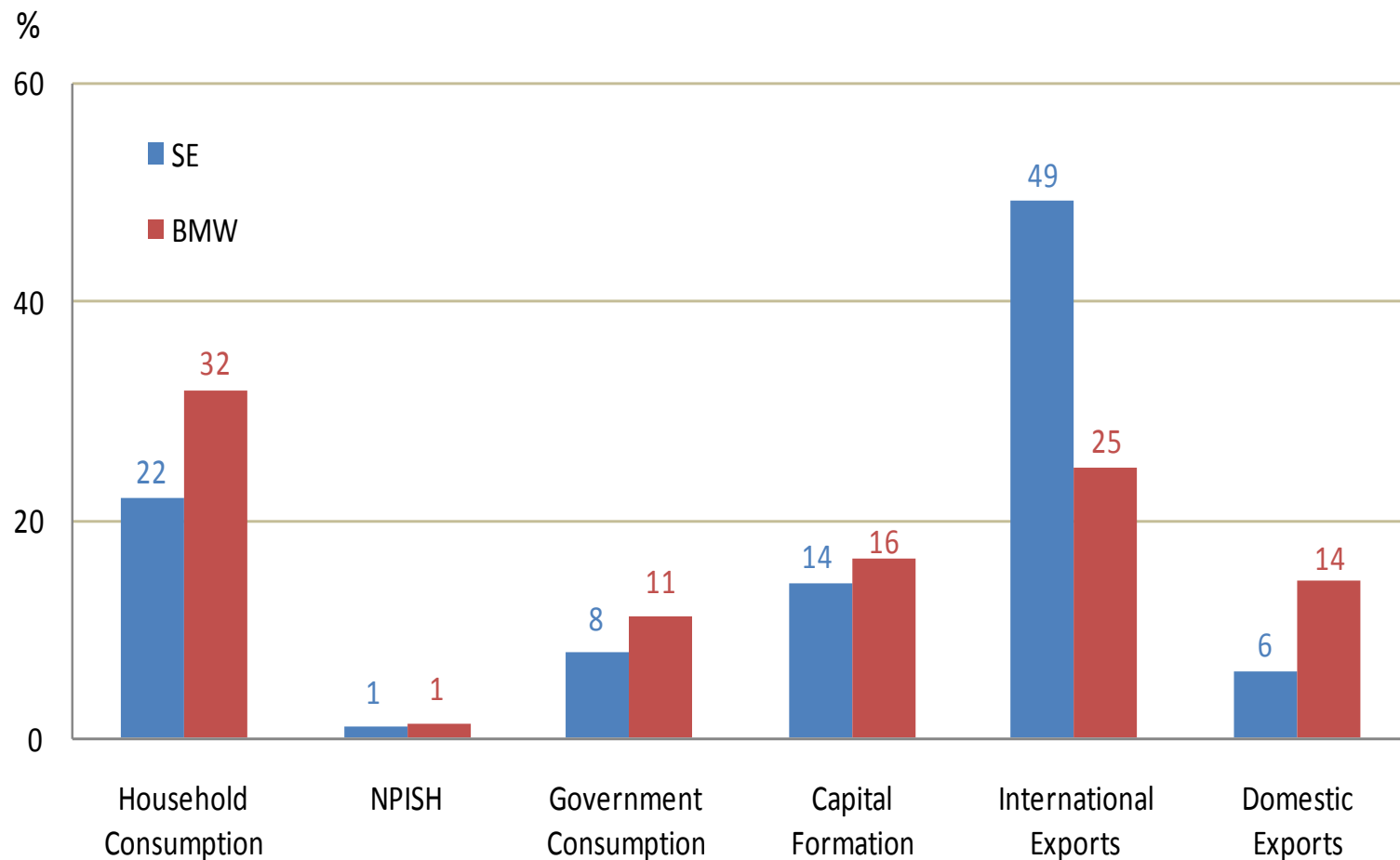
Trade Balance

Regional Net Trade Balances, 2005

	SE	BMW	State
	€ Million	€ Million	€ Million
Agriculture, Forestry & Fishing	-618	234	-383
Manufacturing	34,220	1,199	35,419
Construction	472	-481	-9
Distributive Trades & Communications	-685	-1,949	-2,634
Business Services	-9,424	-3,529	-12,952
Other Services	391	-284	107
<i>Goods</i>	<i>33,603</i>	<i>1,433</i>	<i>35,036</i>
<i>Services</i>	<i>-9,245</i>	<i>-6,243</i>	<i>-15,488</i>
Total	24,358	-4,809	19,549

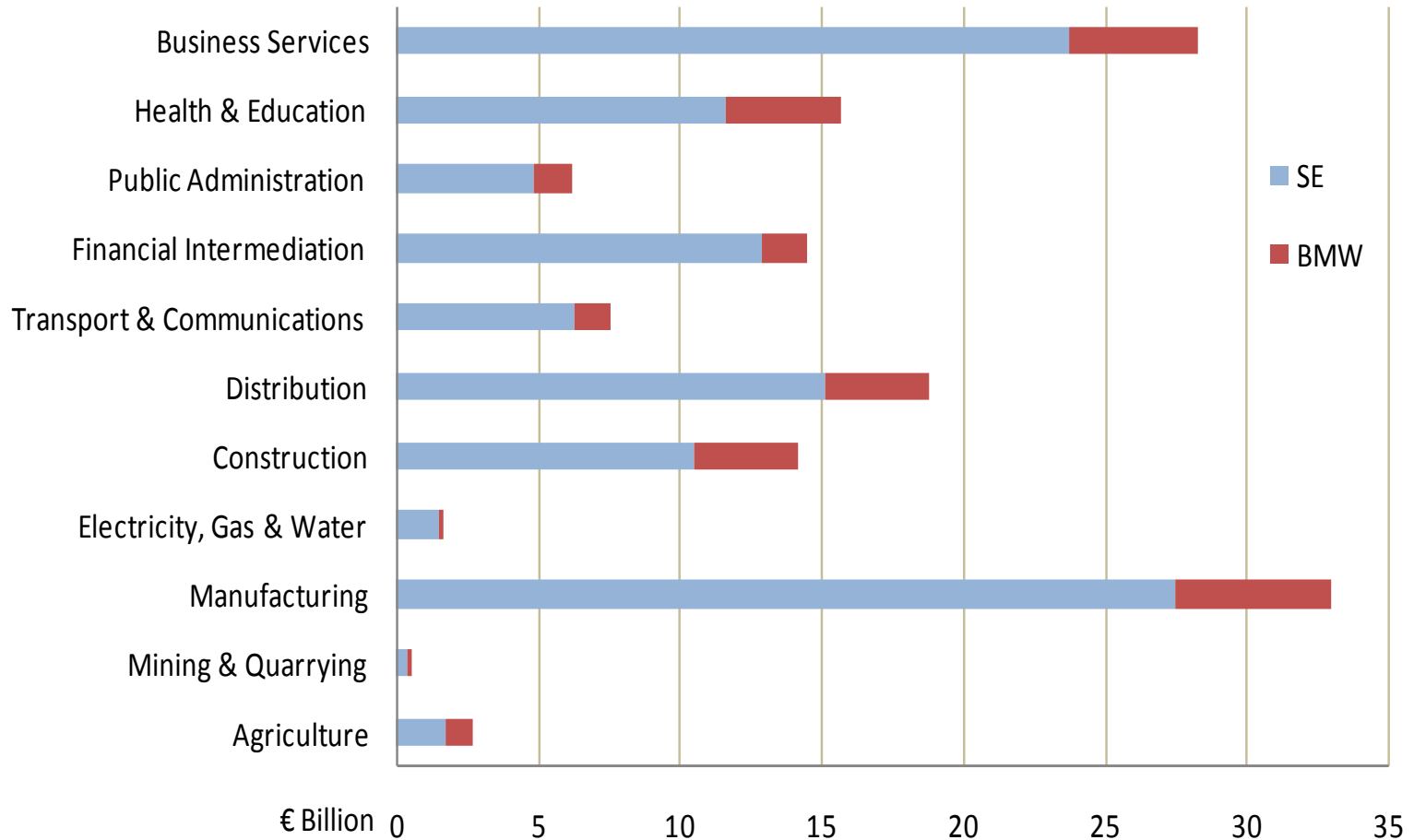
Final Demand

Percentage Distribution of Regional Final Demand, 2005



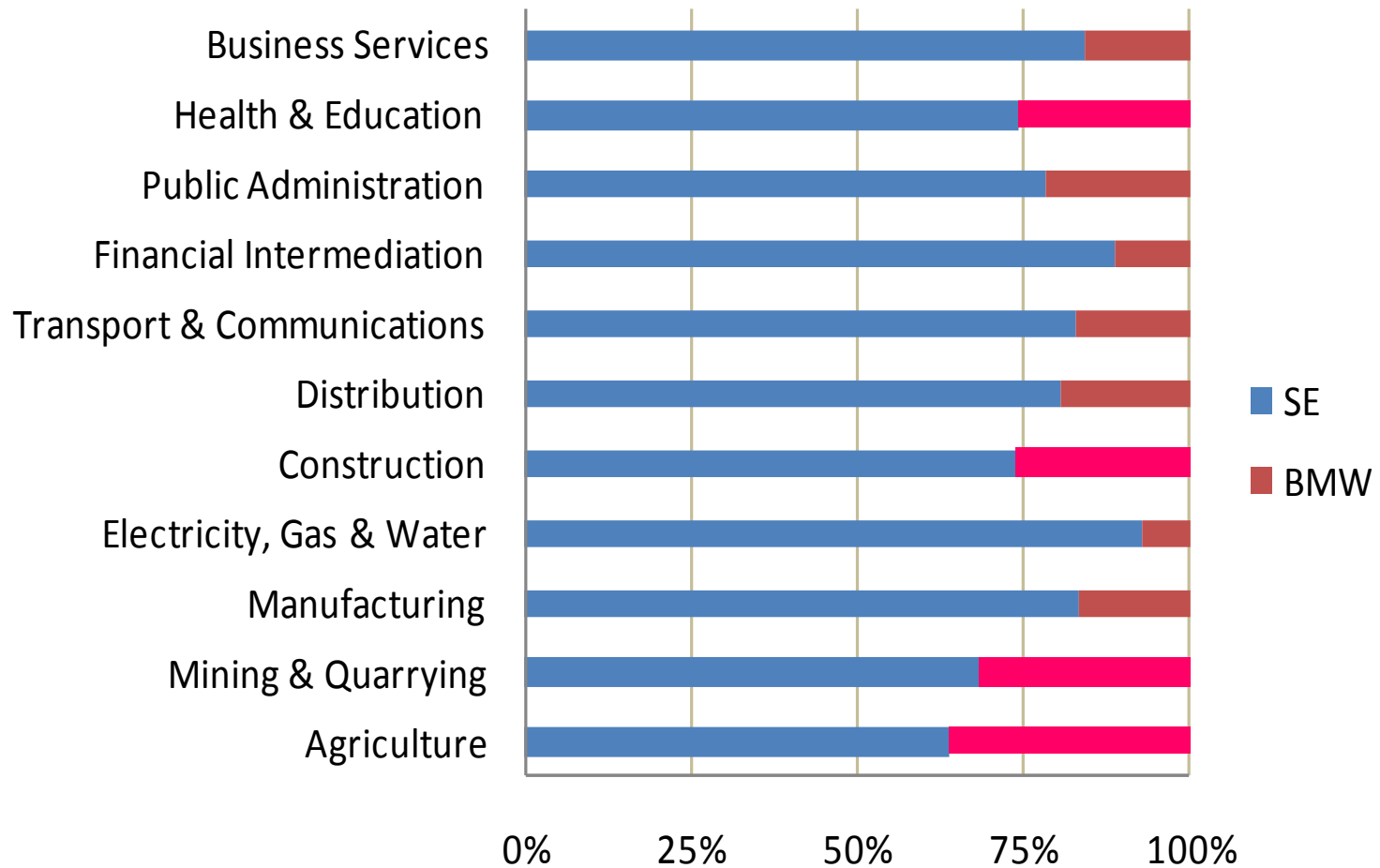
Total GVA

Regional Contribution to GVA at Basic Prices by Broad Industry Sector, €Billions, 2005



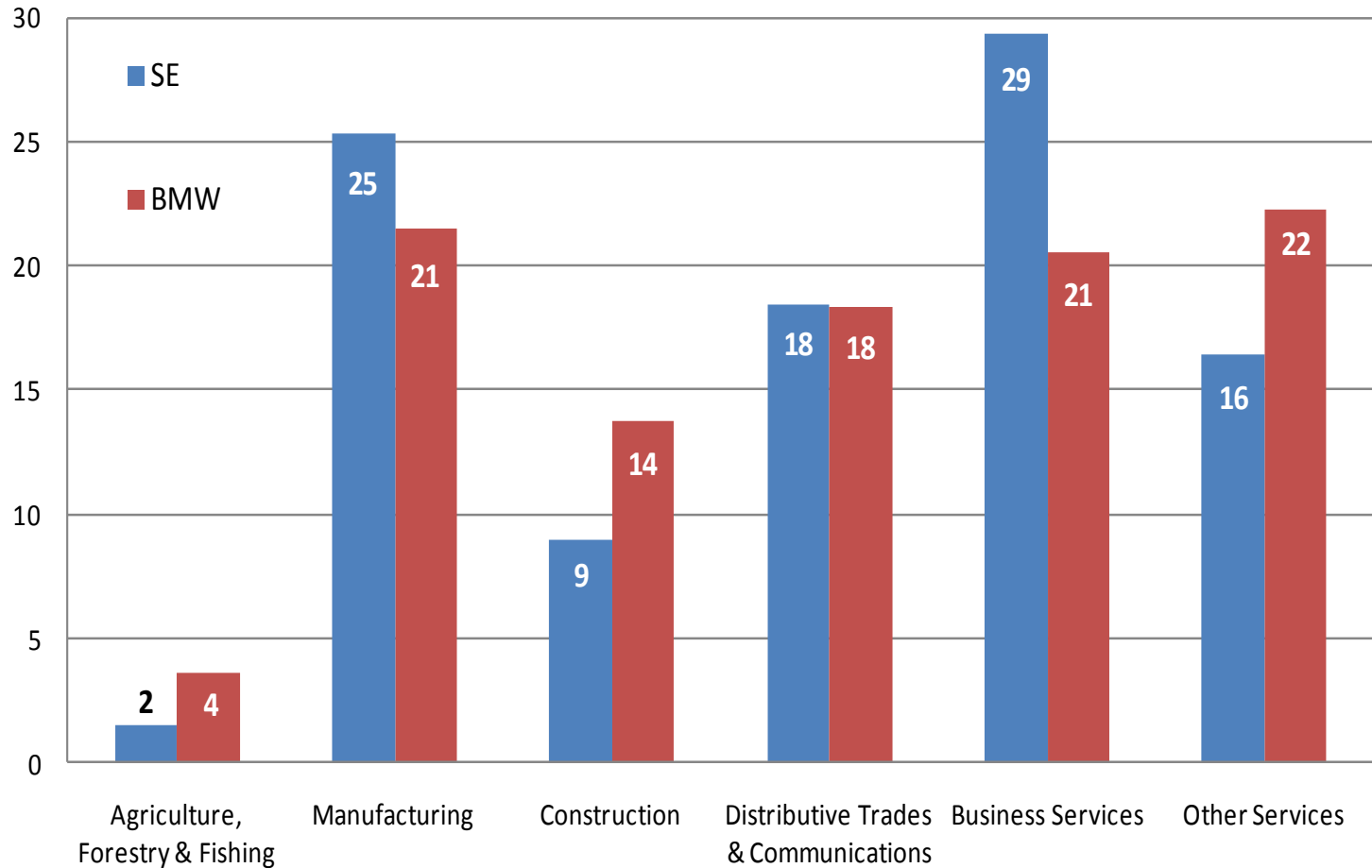
Total GVA

% Regional Contribution to GVA by Broad Industry Sector, 2005



Total GVA

% Sector Contribution to GVA by Region, 2005



Composition of GVA

Composition of Regional GVA, 2005

Components	State		SE		BMW	
	<i>€ Million</i>	%	<i>€ Million</i>	%	<i>€ Million</i>	%
Compensation of Employees	65,963	46	52,045	45	13,918	52
Net Operating Surplus	60,155	42	49,846	43	10,309	38
Consumption of Fixed Capital	16,965	12	13,848	12	3,117	12
Taxes	1,550	1	1,272	1	277	1
Subsidies	-1,442	-1	-801	-1	-640	-2
Gross Value Added	143,191	100	116,210	100	26,981	100

Composition of GVA

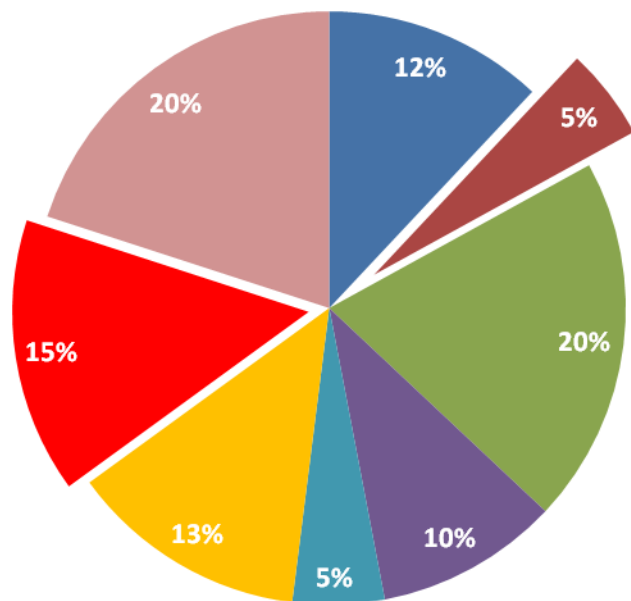
Regional Import Multipliers, 2005

	SE			BMW		
	International Imports	Domestic Imports	Total Imports	International Imports	Domestic Imports	Total Imports
Agriculture, Forestry & Fishing	0.311	0.071	0.382	0.288	0.163	0.451
Manufacturing	0.591	0.016	0.607	0.388	0.145	0.533
Construction	0.313	0.027	0.341	0.180	0.115	0.295
Communications	0.238	0.017	0.256	0.089	0.085	0.174
Business Services	0.343	0.011	0.354	0.085	0.104	0.189
Other Services	0.144	0.010	0.154	0.109	0.084	0.193

Before & After

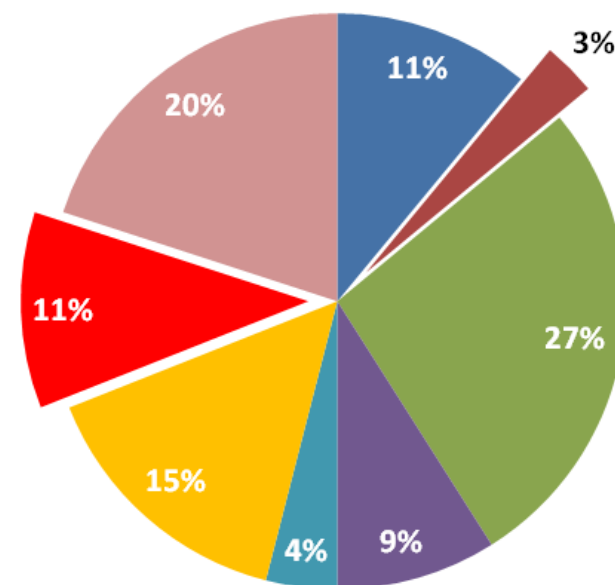
Sector Composition of GDP

2007

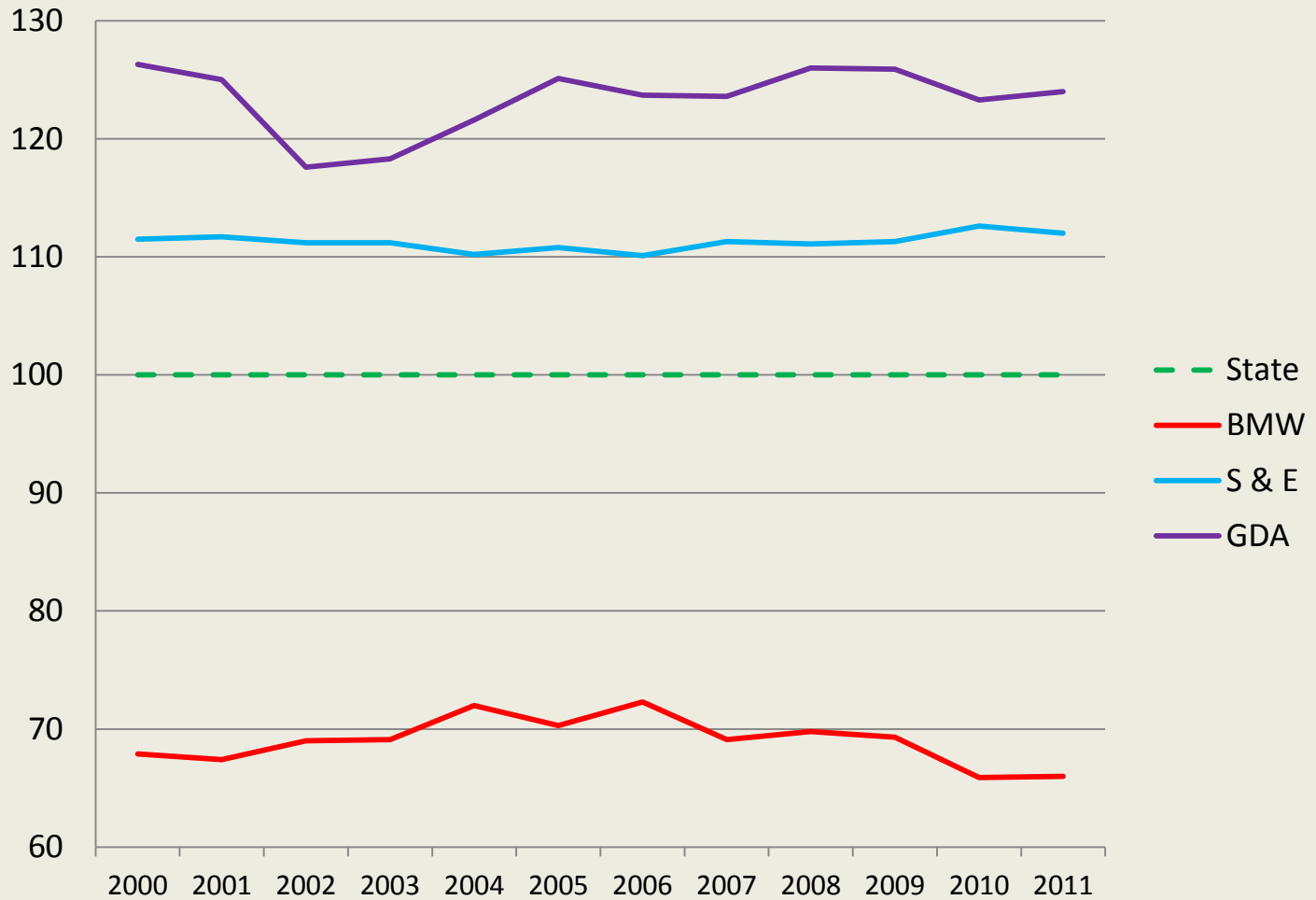


- Net Taxes
- Building & Construction
- Transportable Goods & Utilities
- Distribution
- Transport & Communications
- Health & Education
- Financial Services
- Other Services

2011

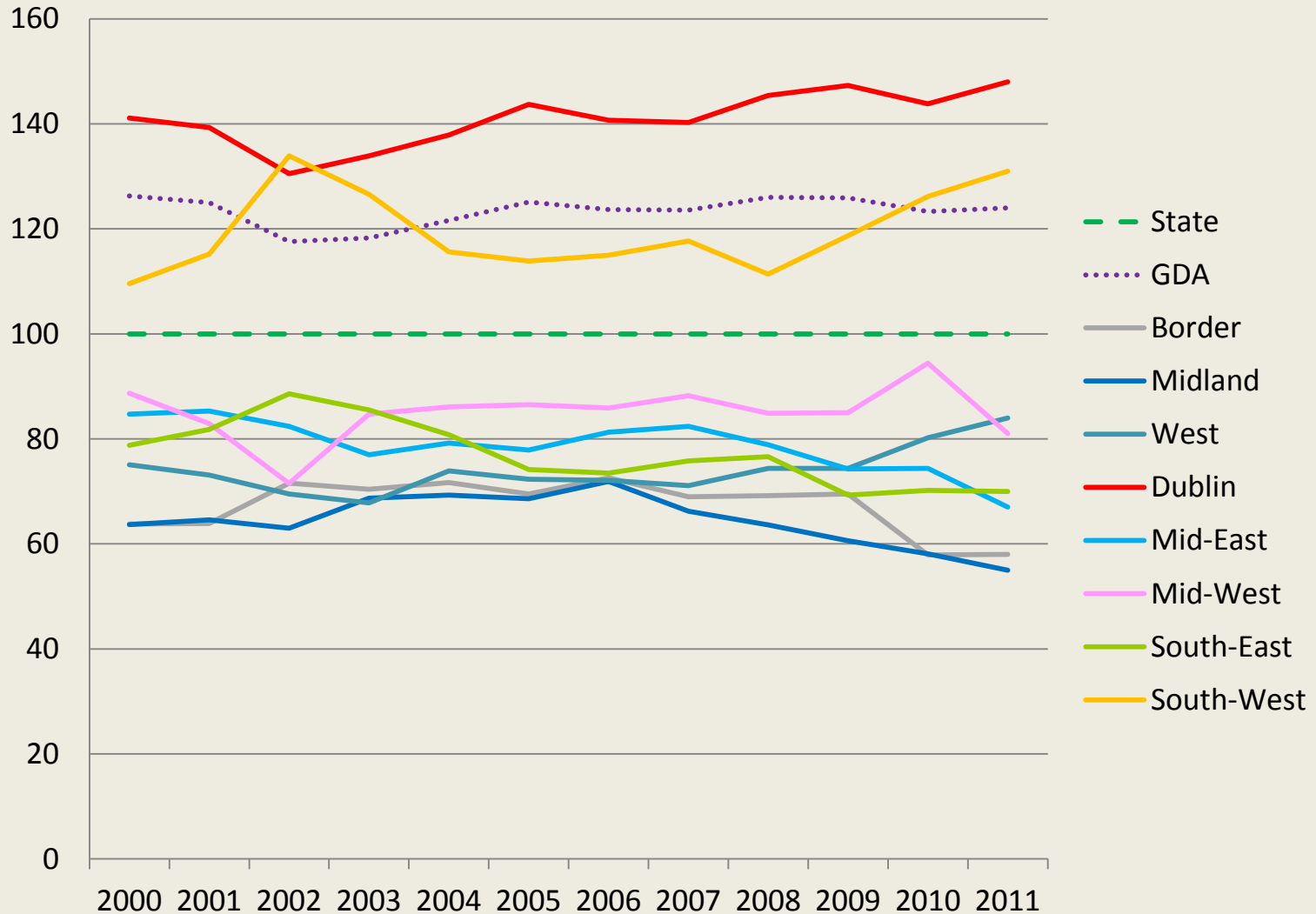


Index of Per Capita GVA (Basic Prices) State = 100 NUTS 2 & GDA



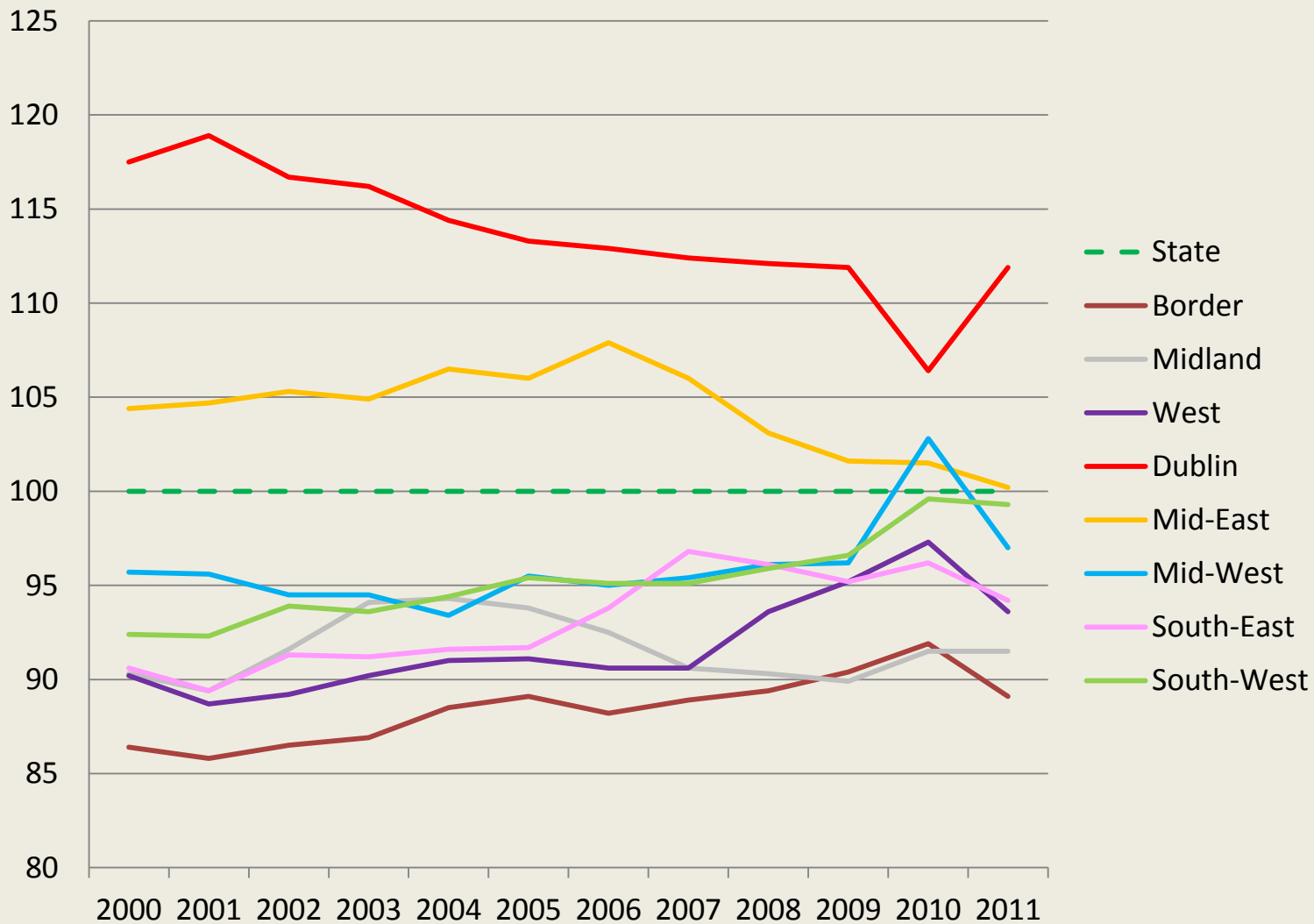
Index of Per Capita GVA (Basic Prices)

State = 100
NUTS 3 & GDA

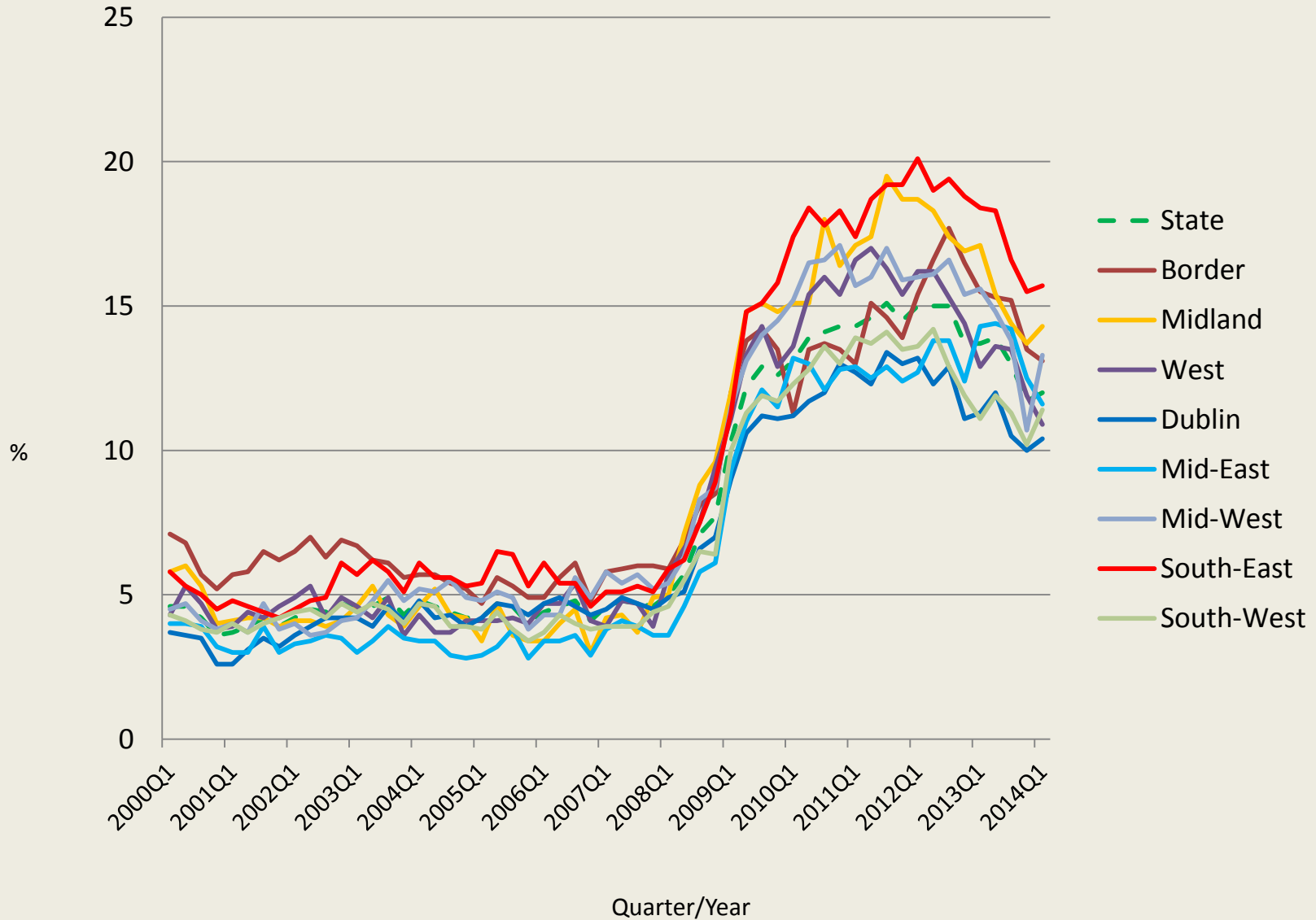


Index of Per Capita Disposable Income

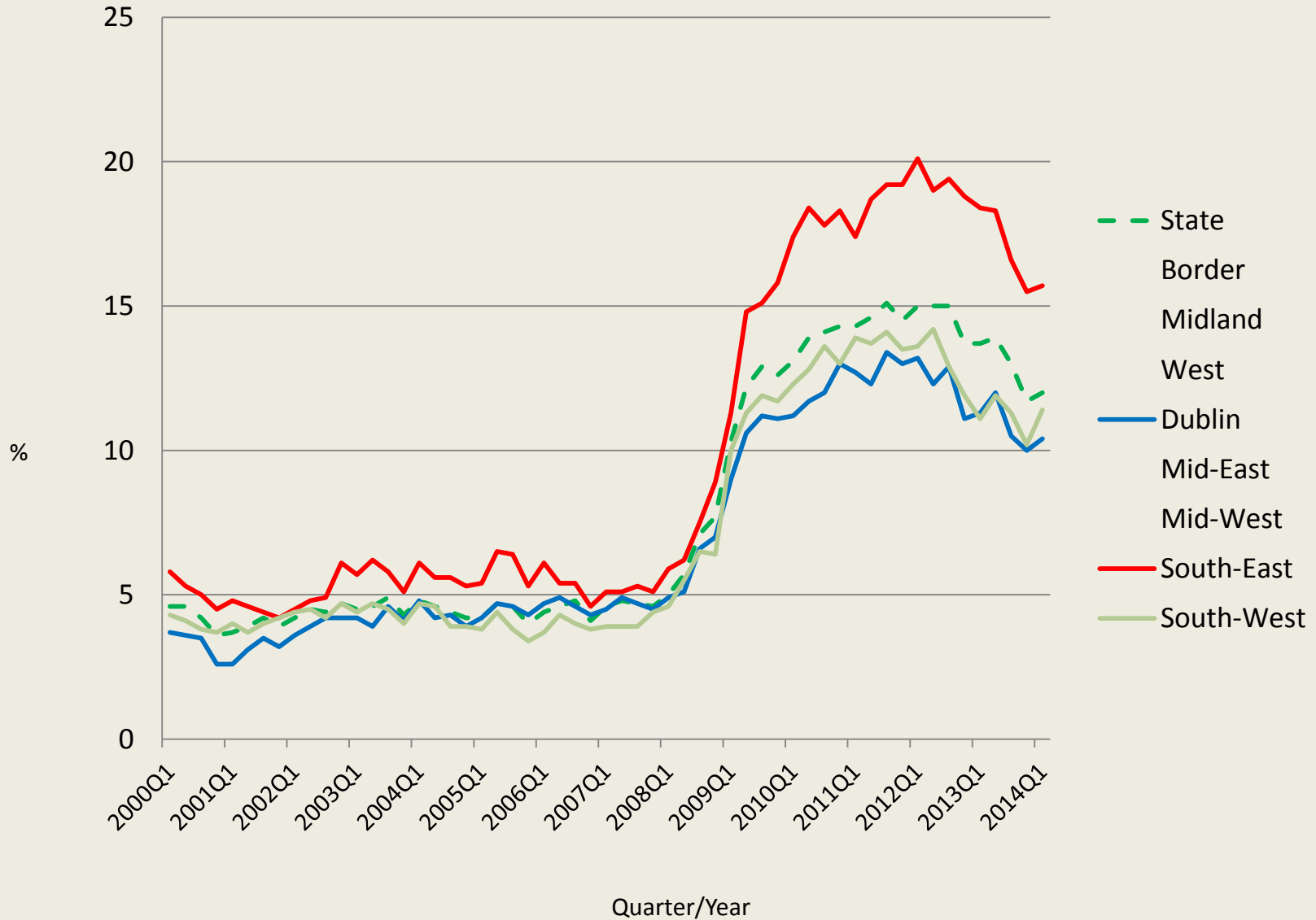
State = 100



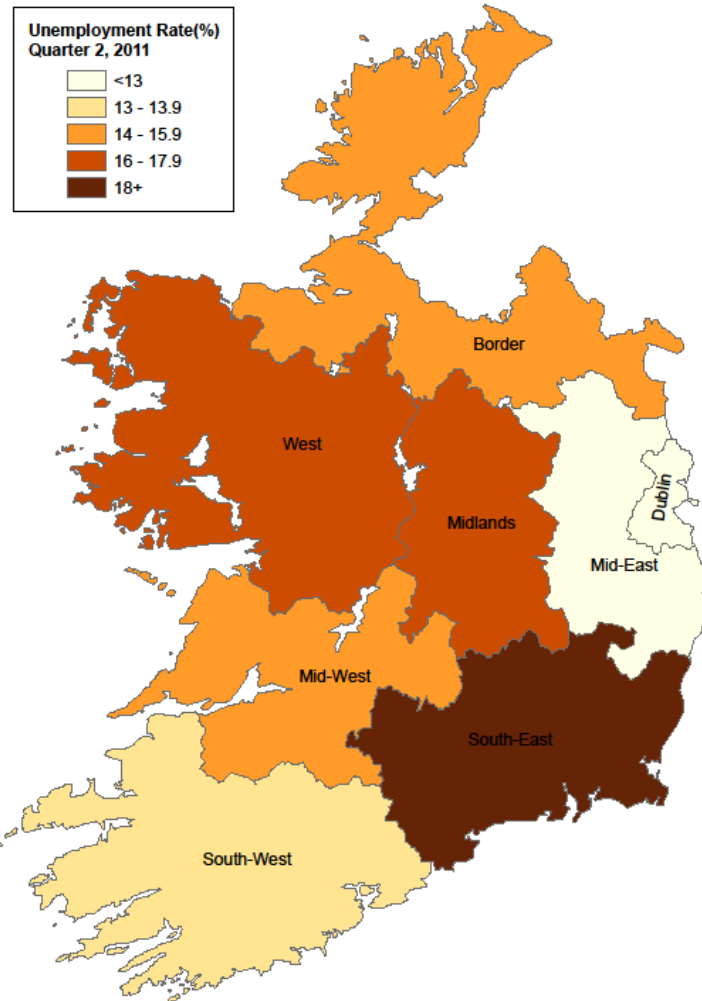
Regional Unemployment Rates 2000 - 2013



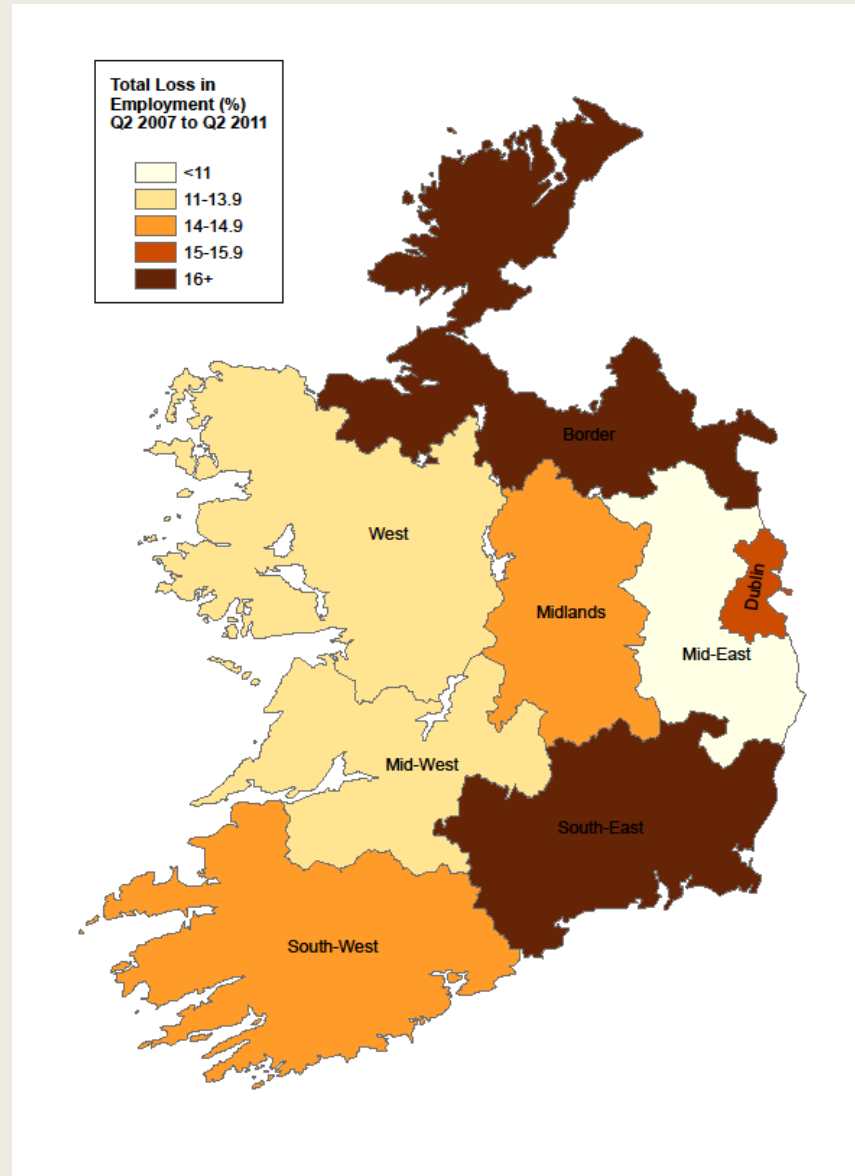
Regional Unemployment Rates 2000 - 2013



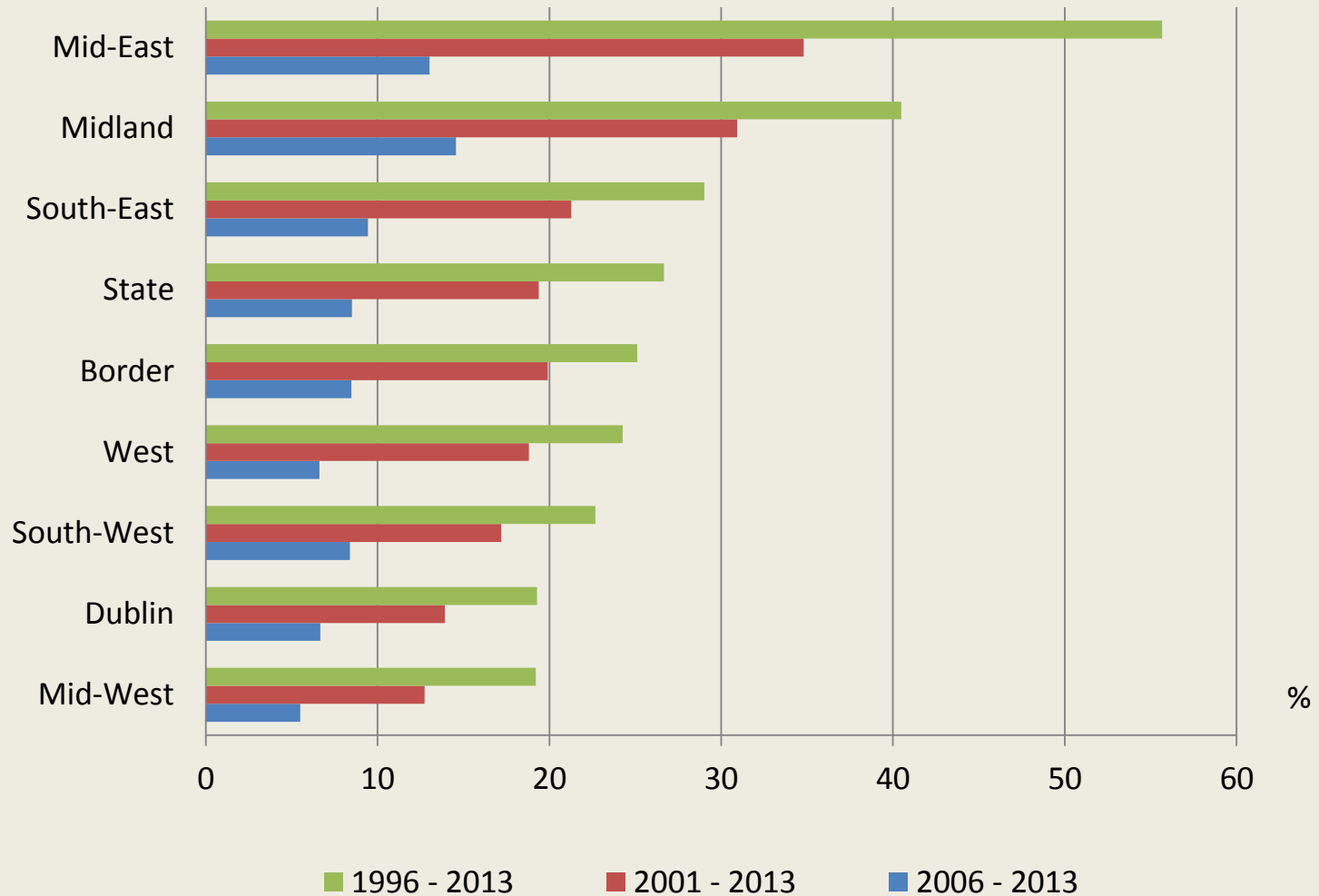
Unemployment Rates (%) by Region 2011



Regions most affected by employment loss 2007 - 2011

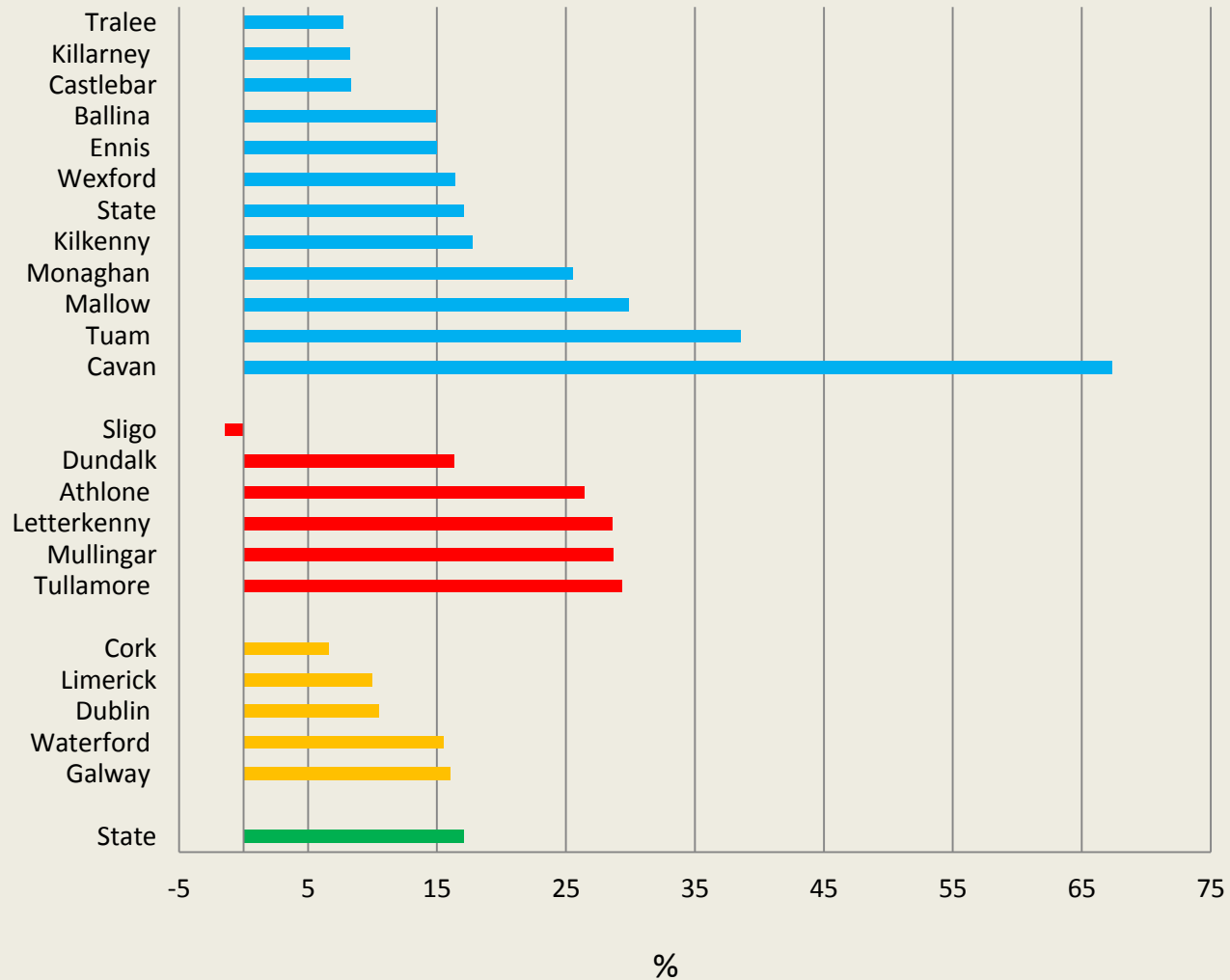


Population Growth 1996 - 2013



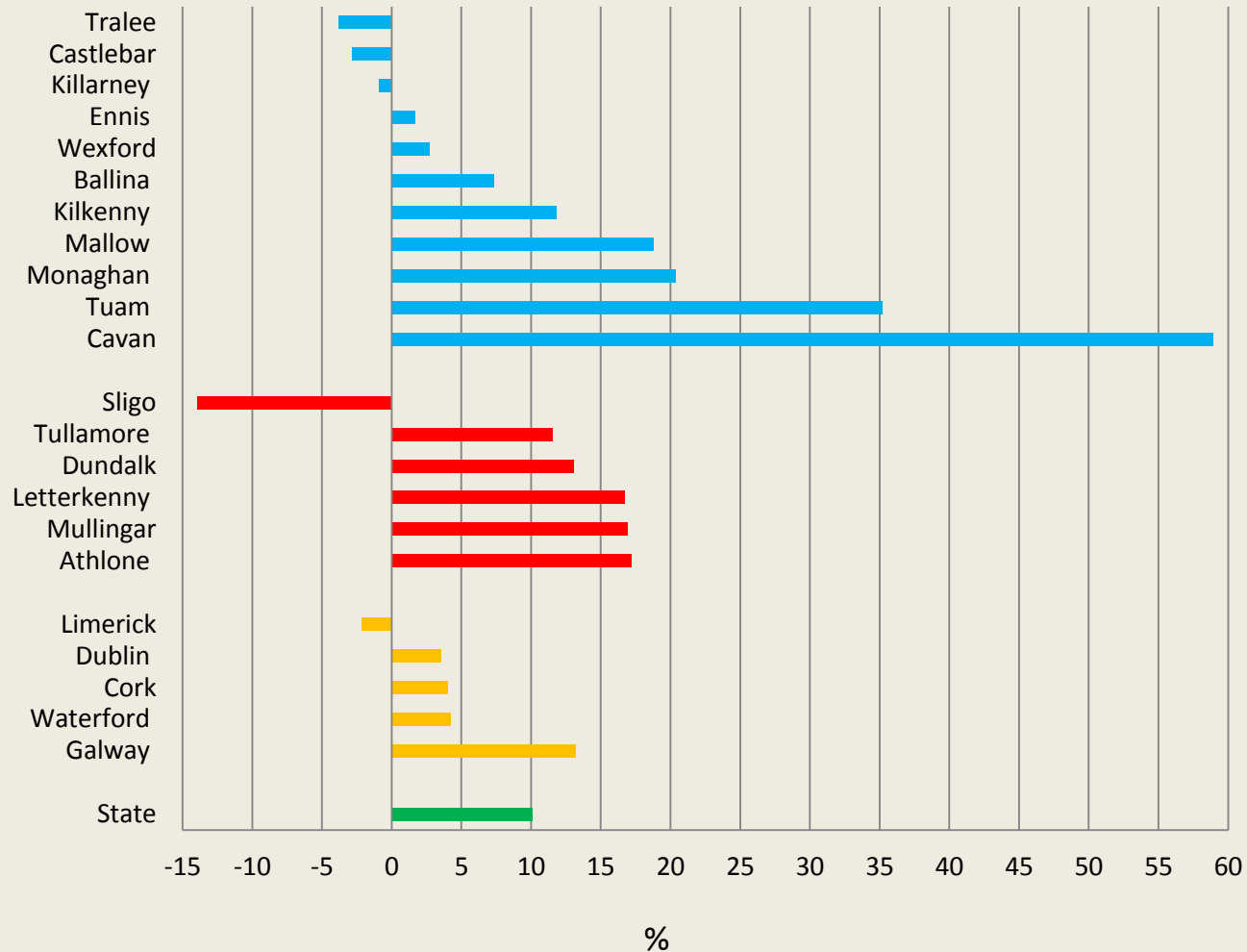
Gateways & Hubs 2002 - 2011

Population Growth

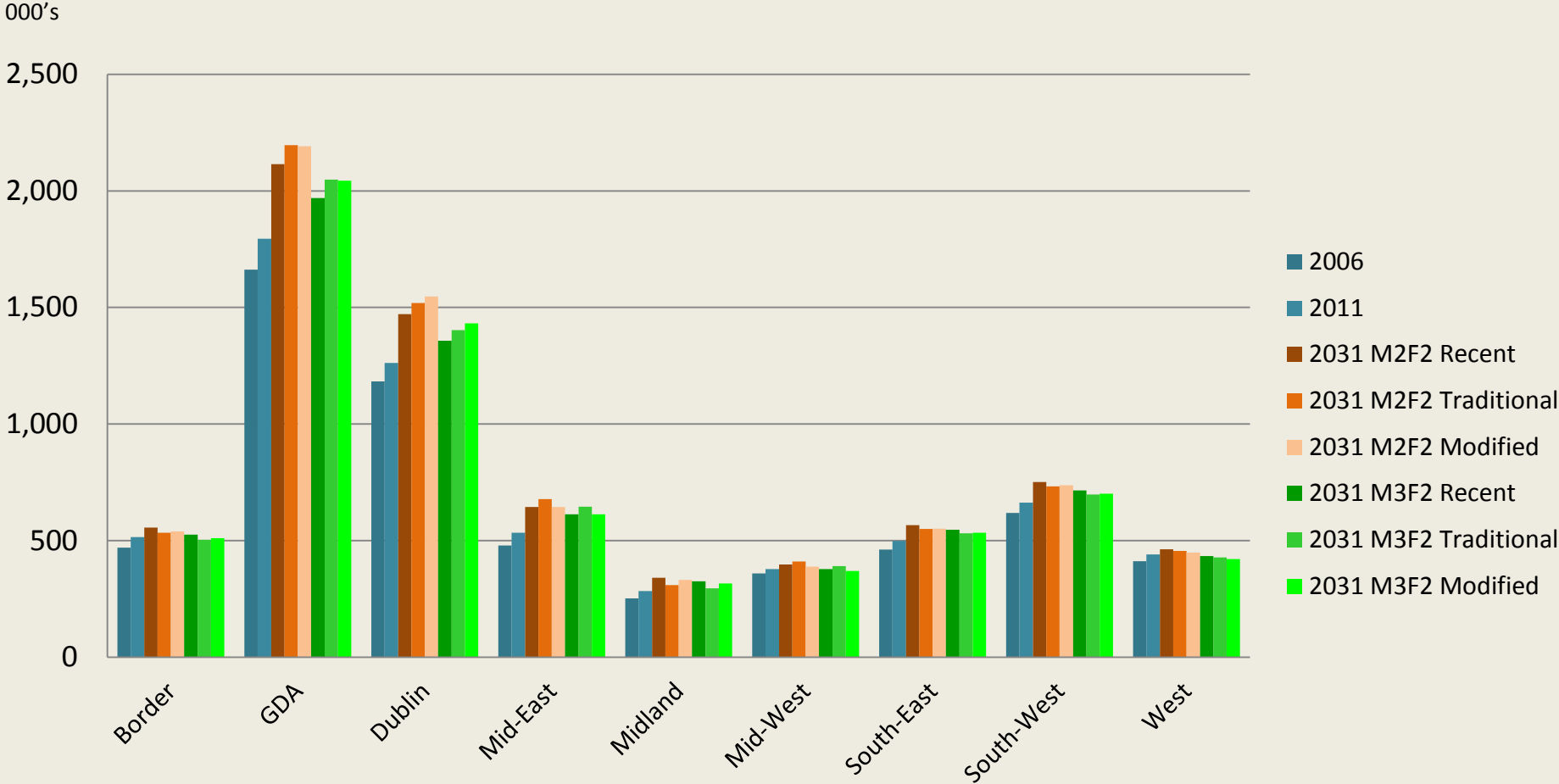


Gateways & Hubs 2002 - 2011

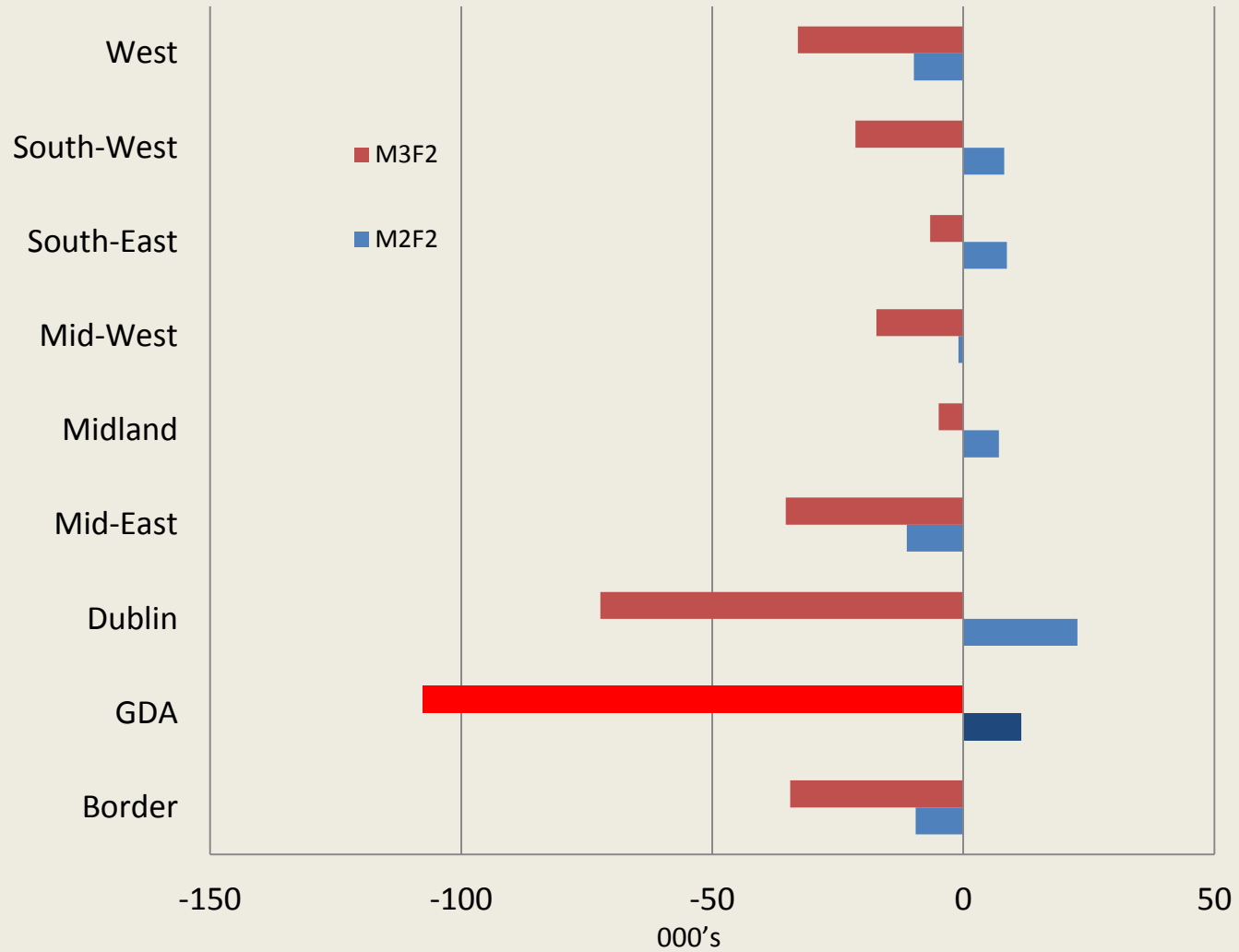
Employment Growth



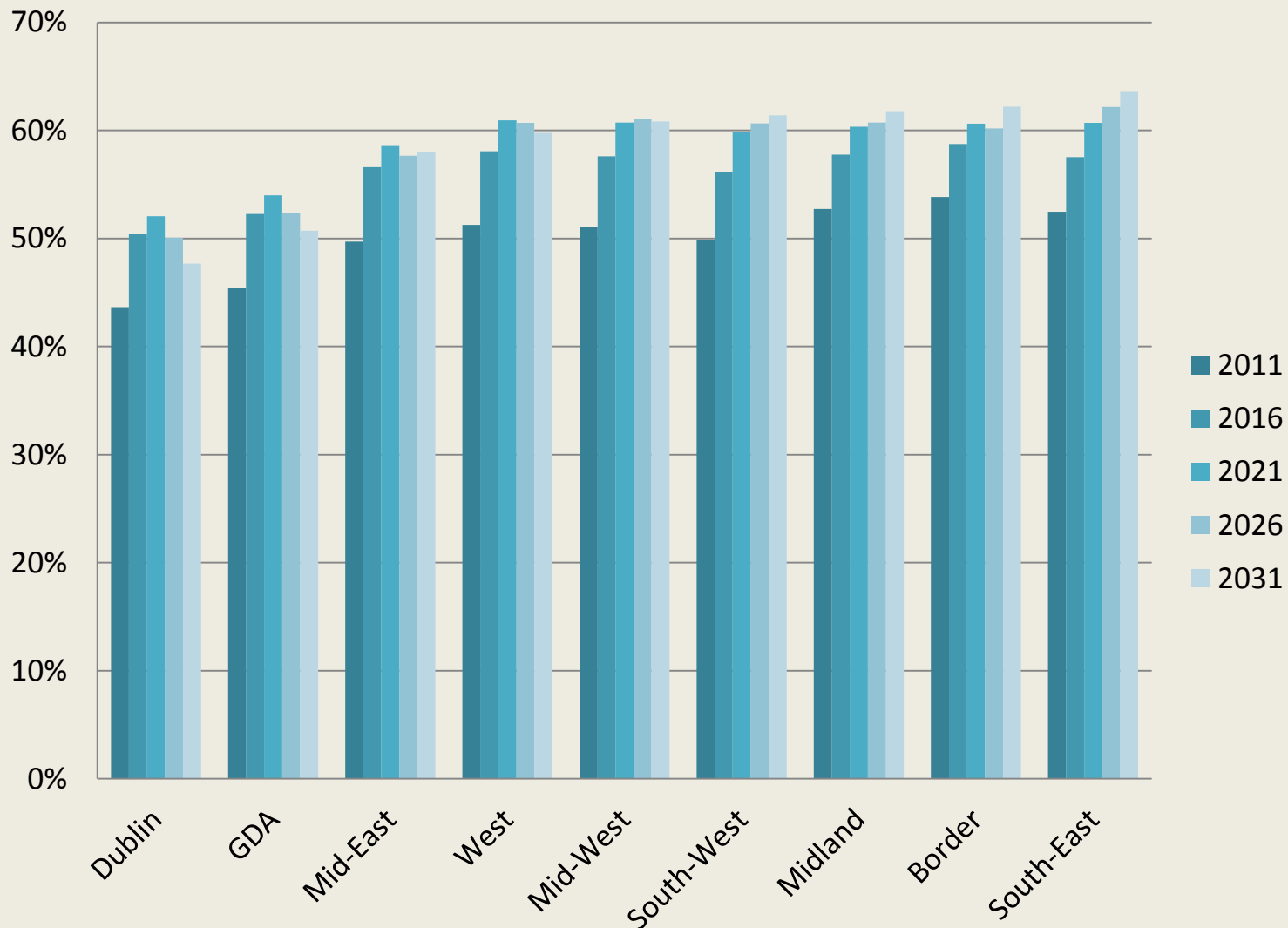
Population Change 2006 - 2031 Various Models



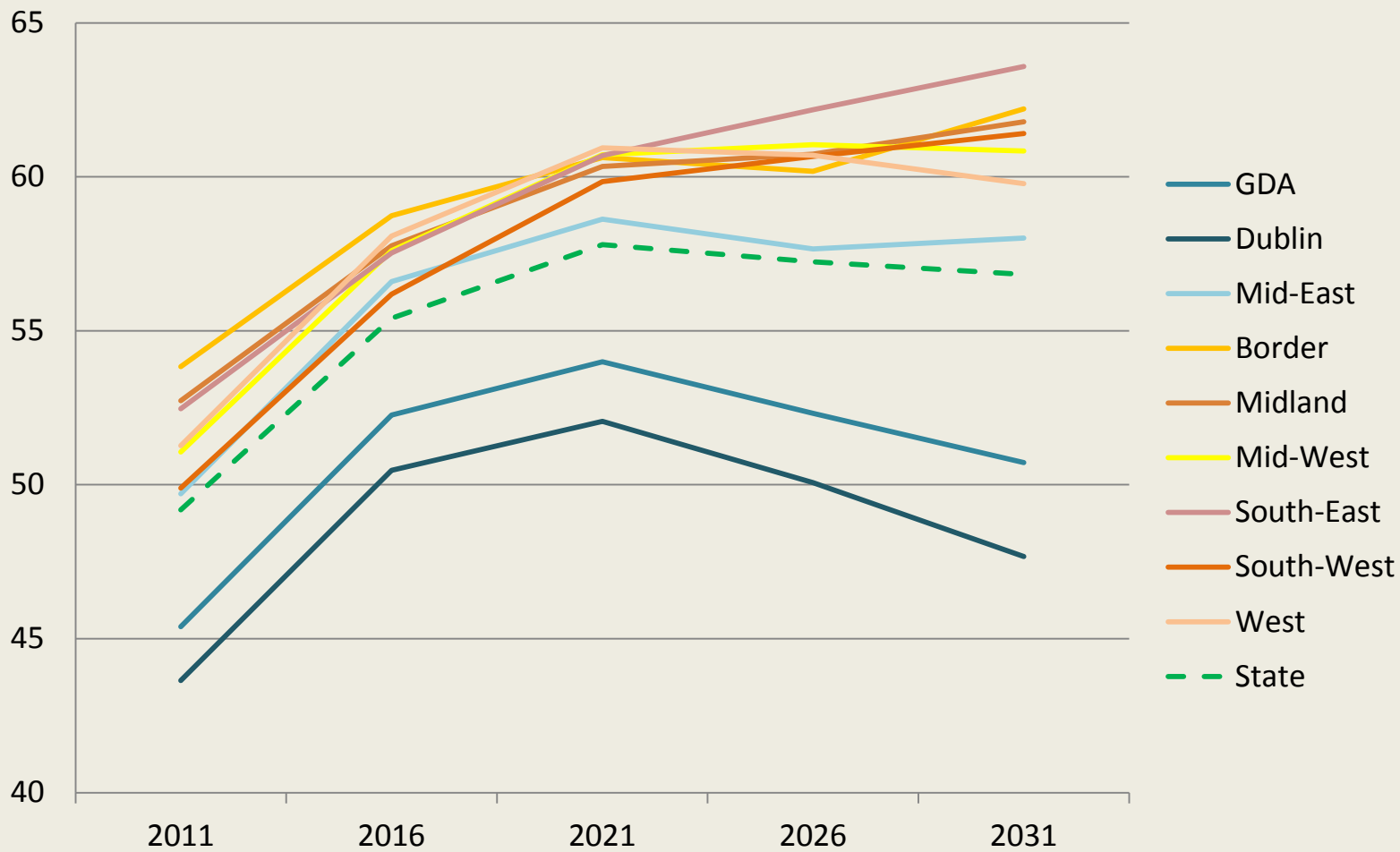
Future Migration 2 Alternatives



Projected Age Dependency Ratios (M2F2) 2011 – 2031

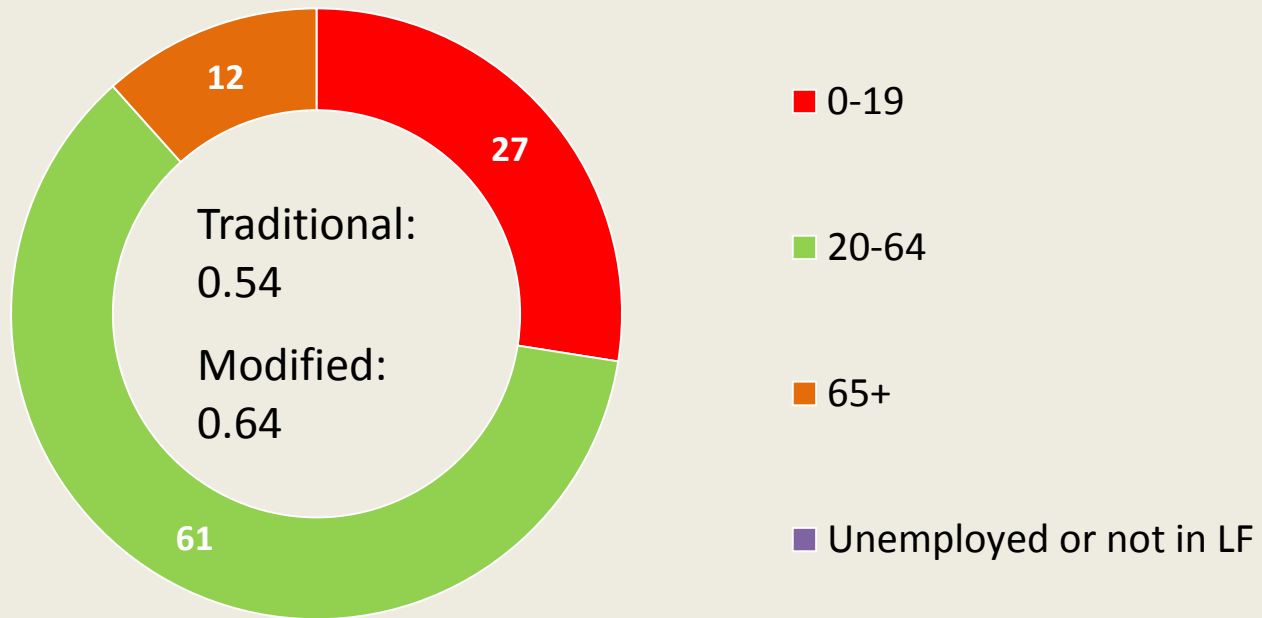


Projected Age Dependency Ratios (M2F2) 2011 – 2031



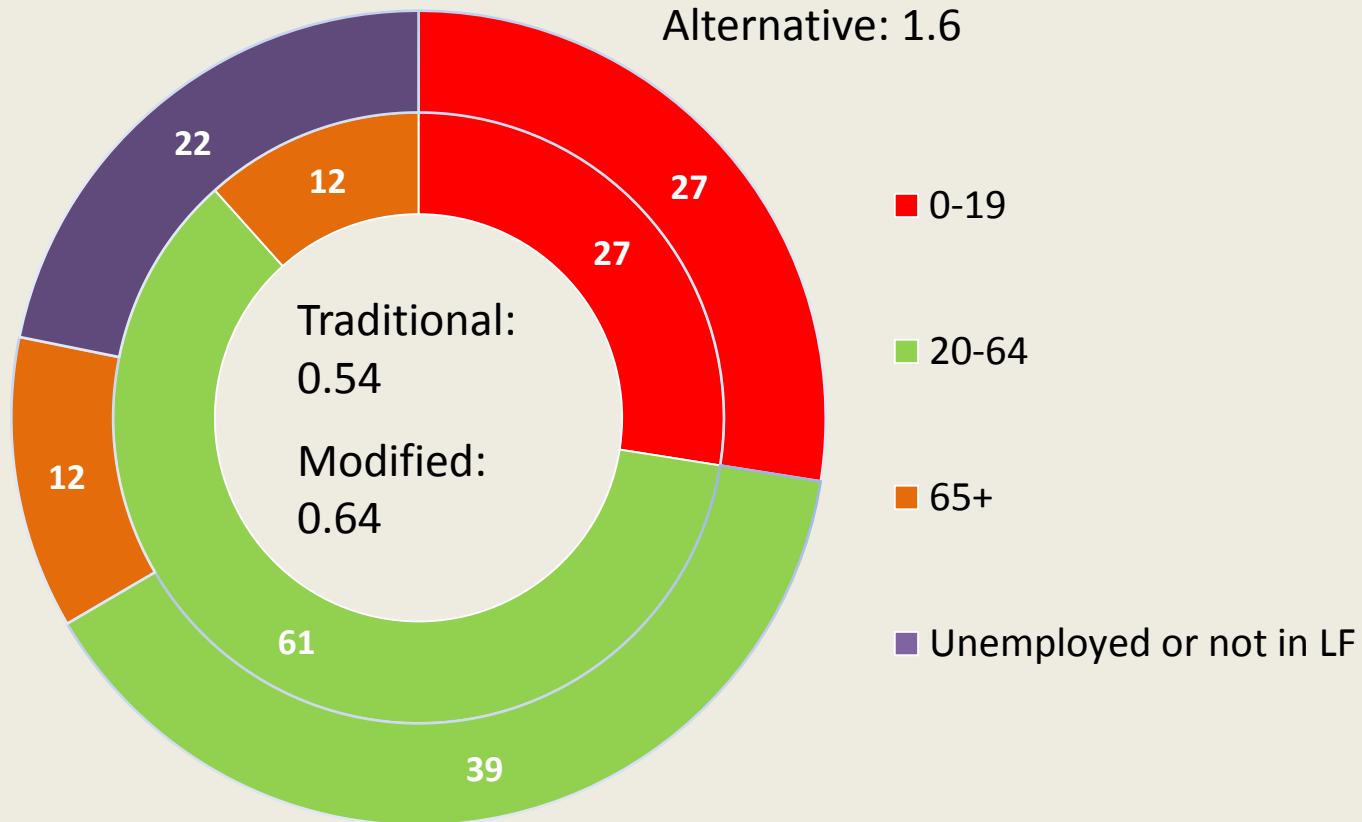
Age Dependency Ratios

A slightly more pessimistic view...

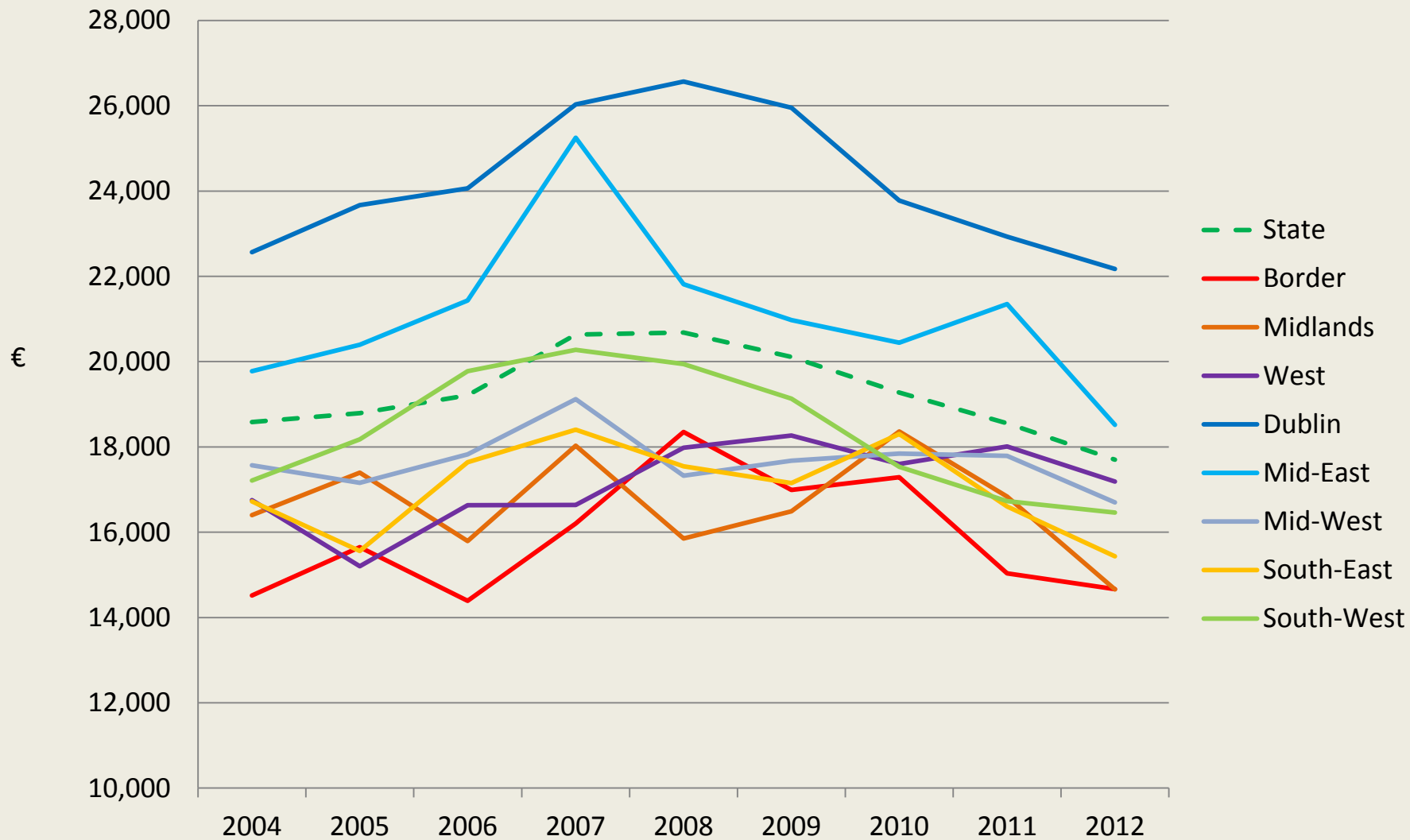


Age Dependency Ratios

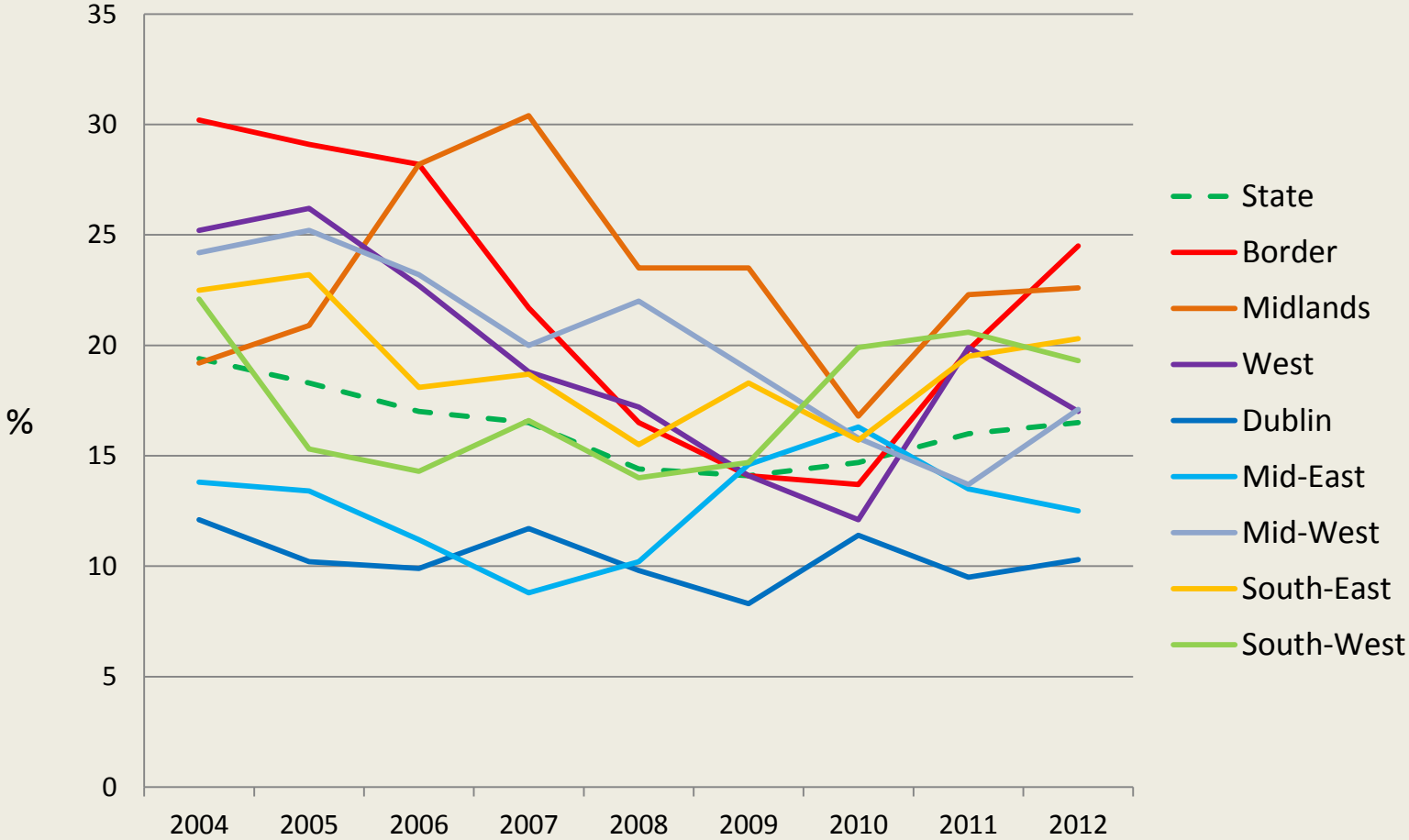
An alternate, more pessimistic view...



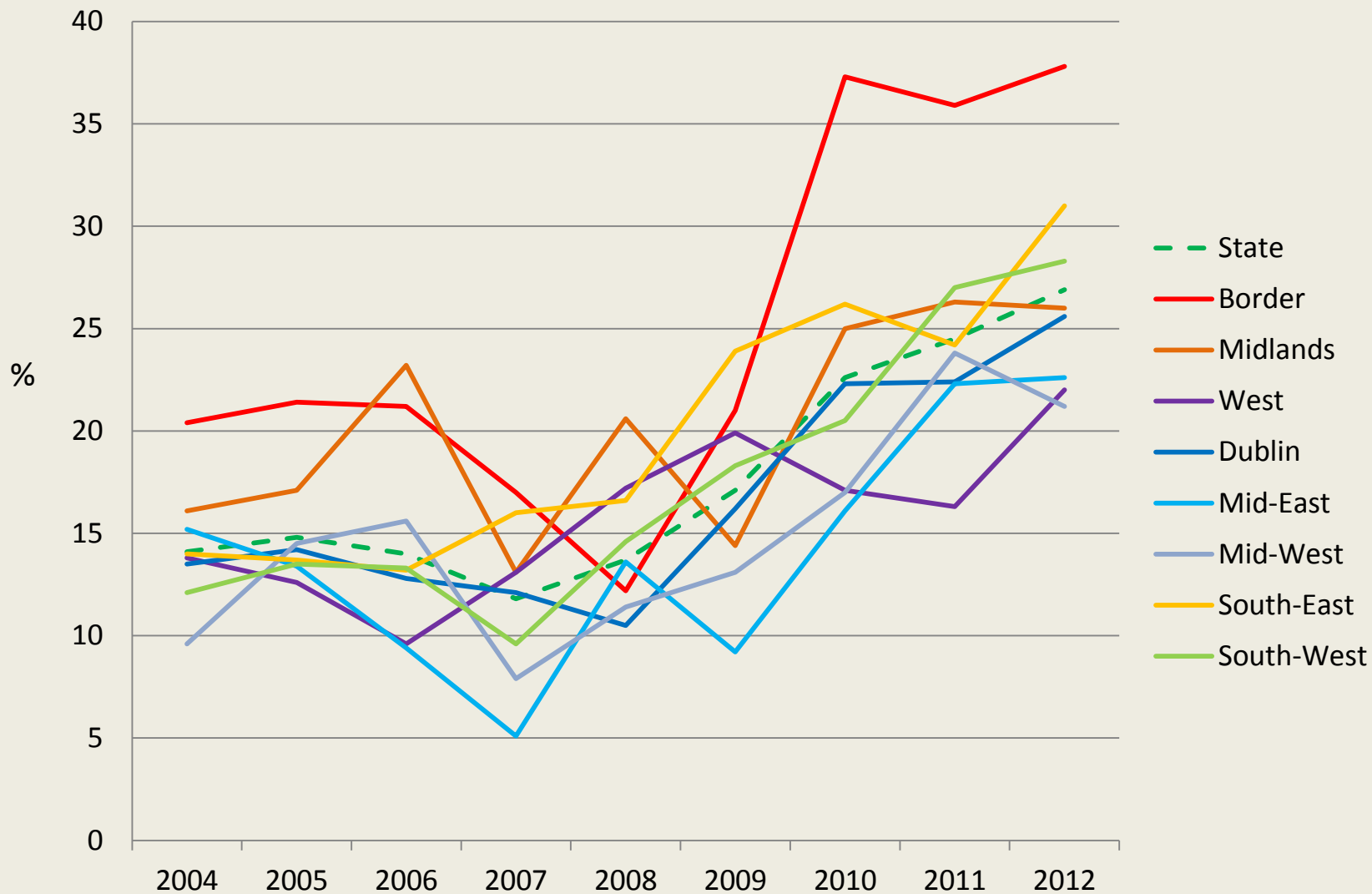
Real Median Income 2004 - 2012



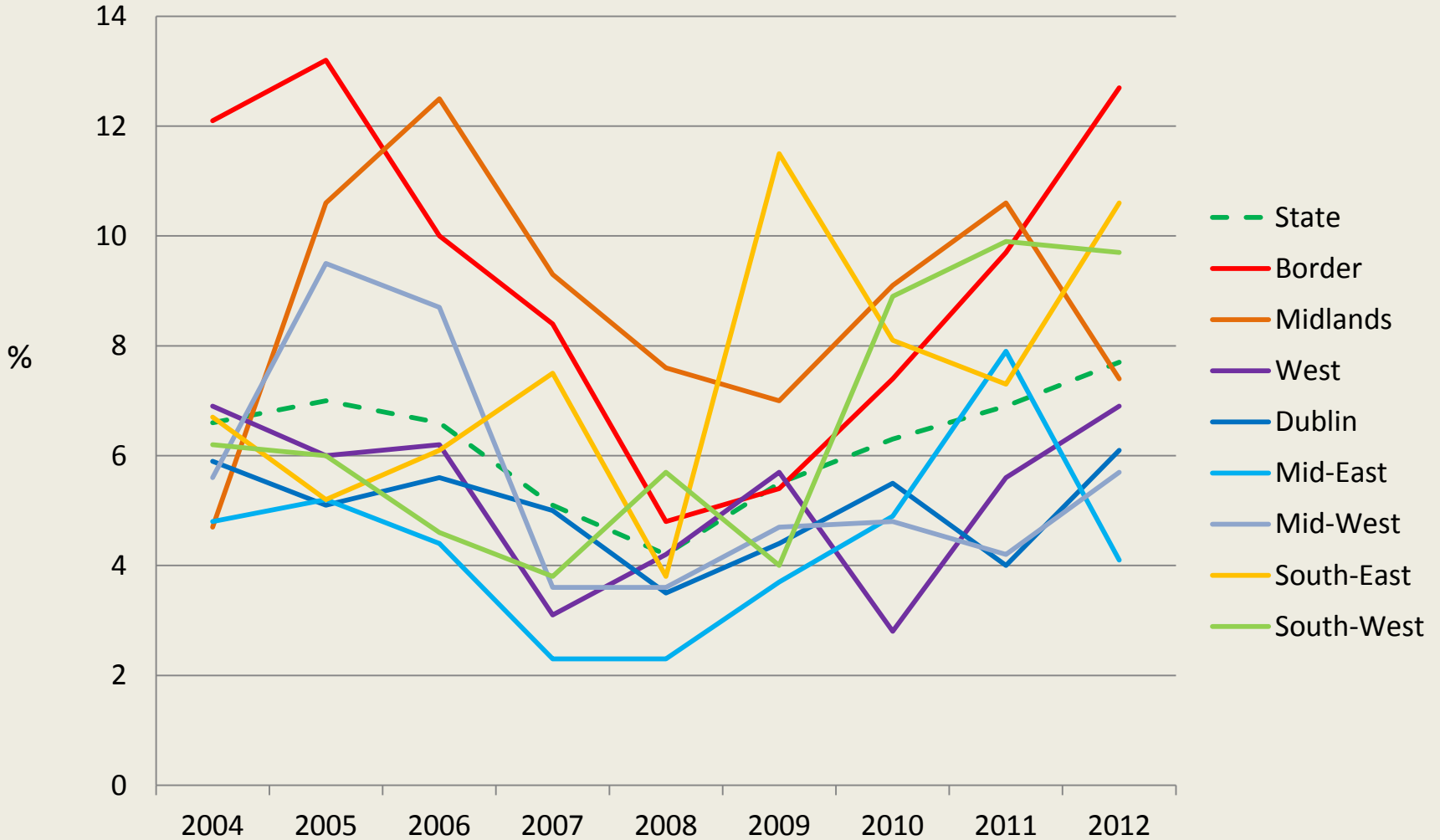
At Risk of Poverty 2004 - 2012



Material Deprivation 2004 - 2012

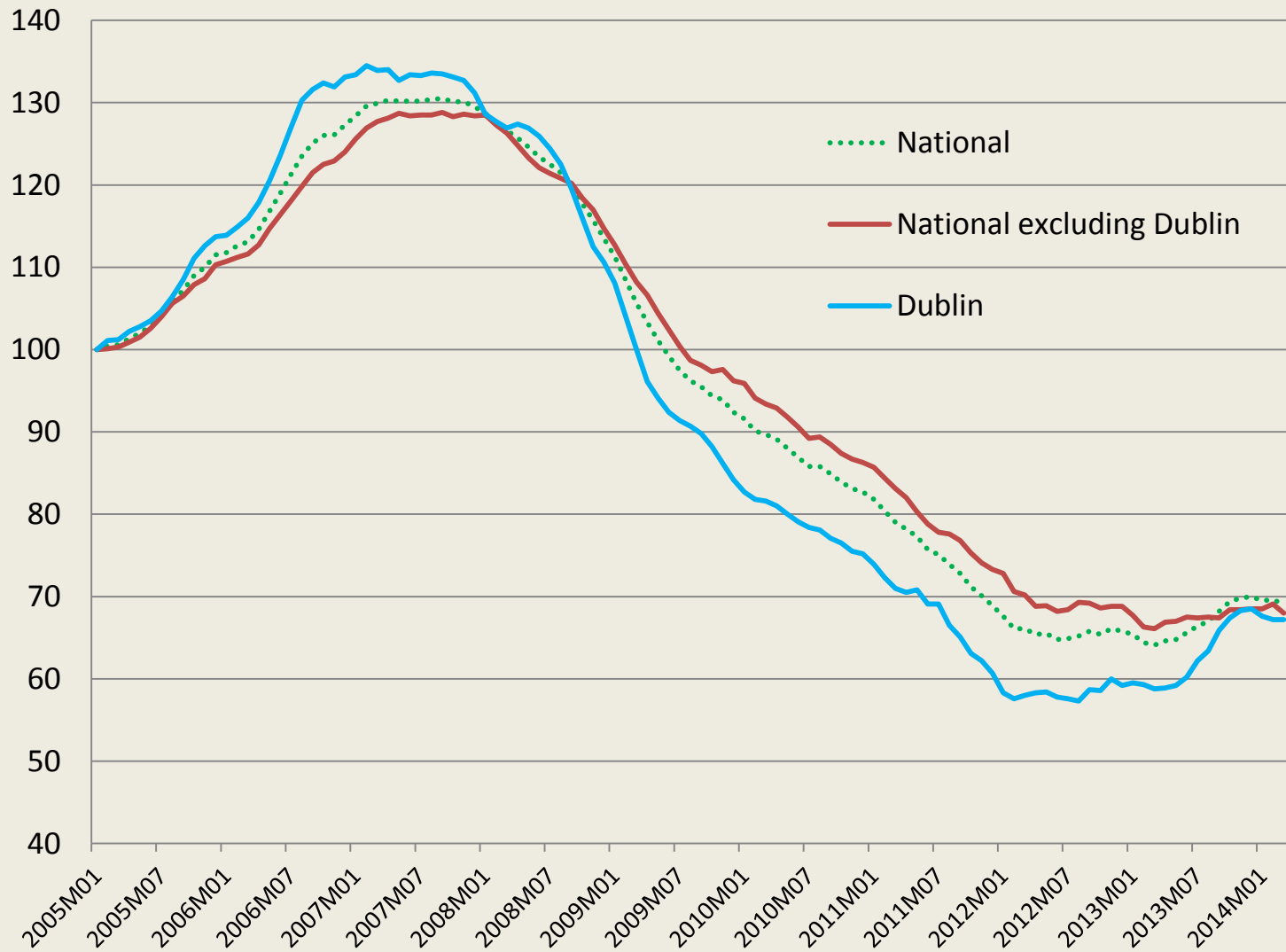


Consistent Poverty 2004 - 2012

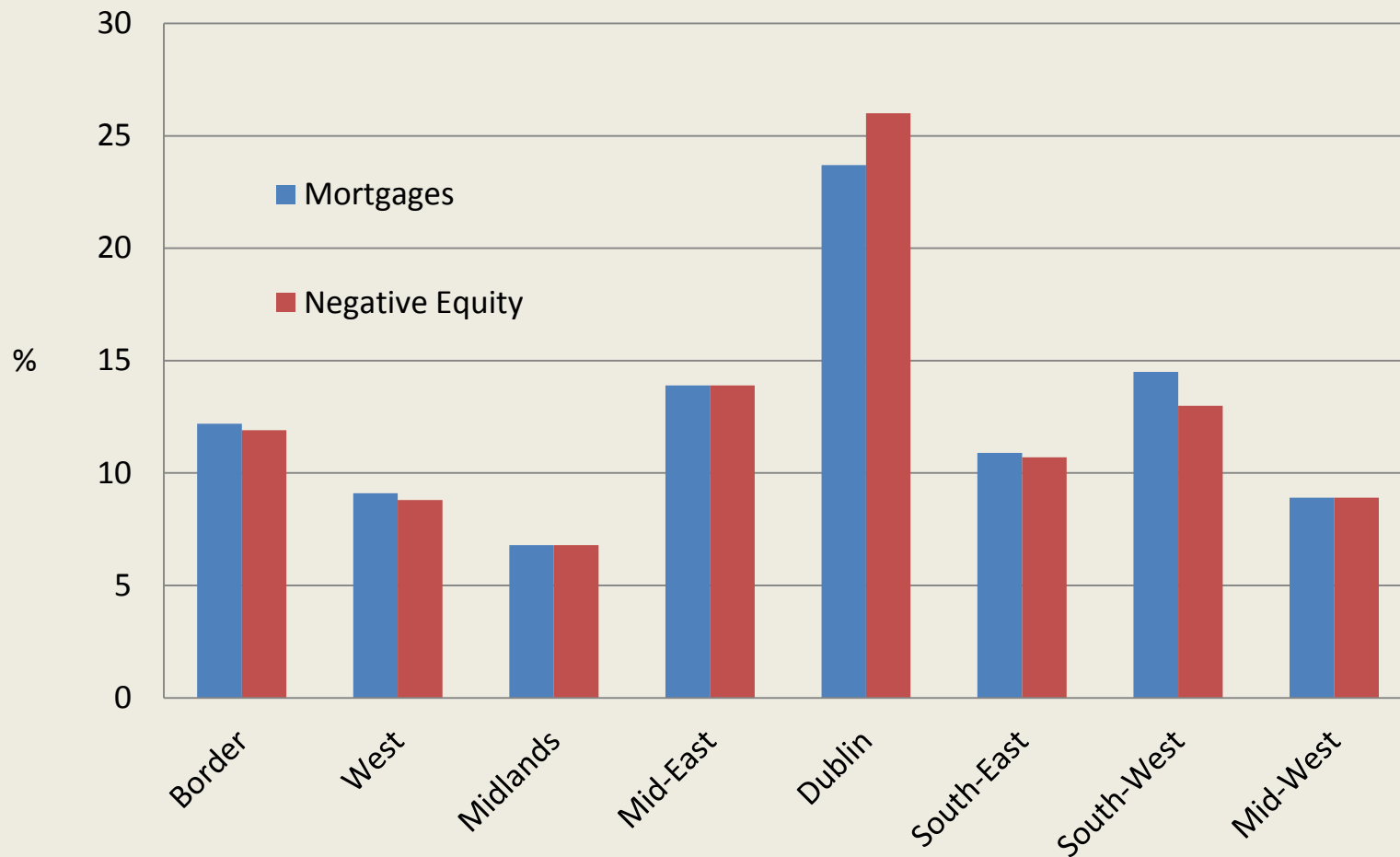


Residential Property Prices

Index: Jan 2005 = 100



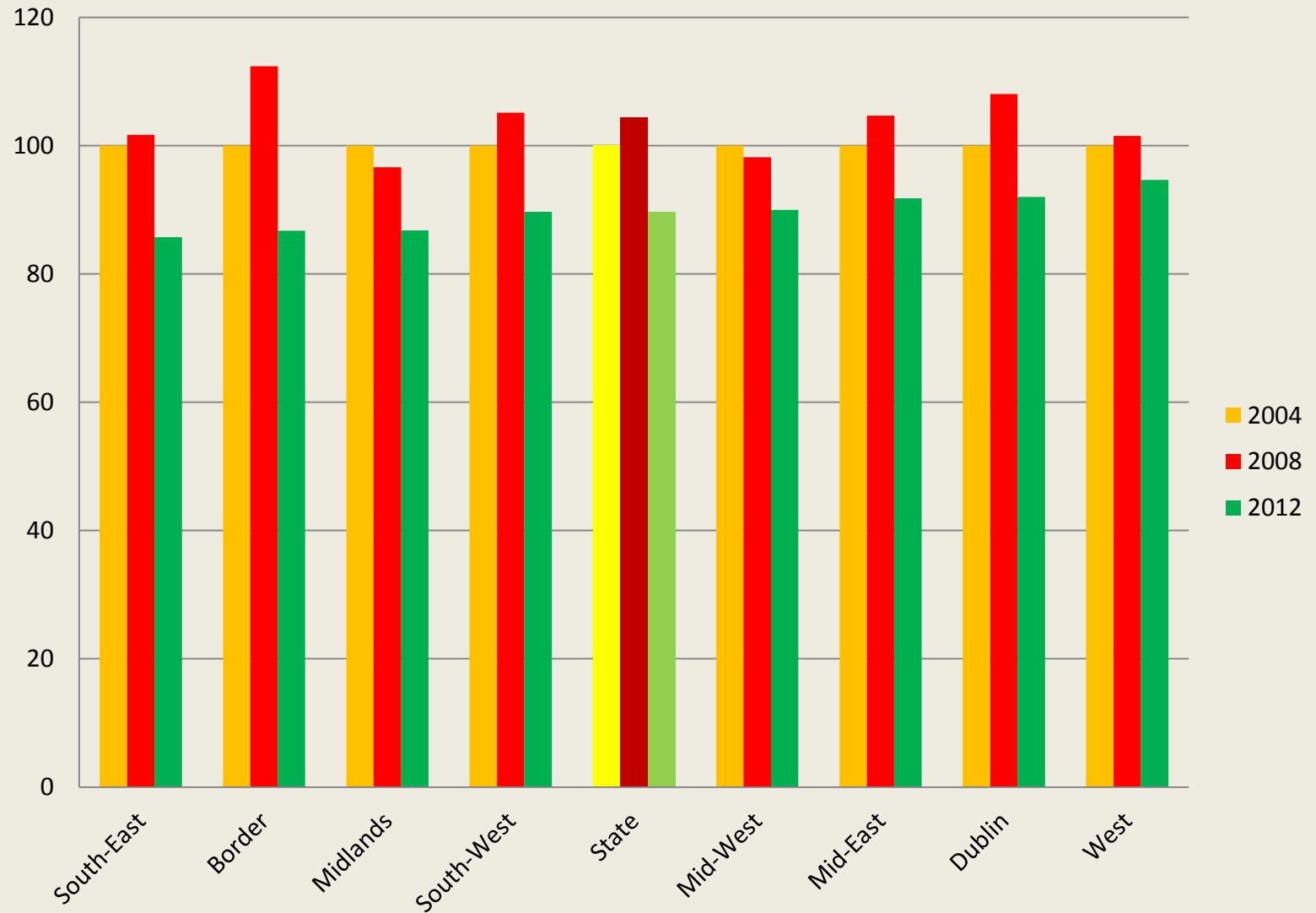
Regional Distribution of Mortgages & Negative Equity



Source: Duffy & O'Hanlon – ESRI working paper No. 463

Regional Wellbeing

A crude estimate (Year: 2004 = 100)



Conclusions

Regions matter – despite some being artificial

Distinct economic and social structures

MNEs have a significant impact (2 speed economy)

Recovery being led by S&E - Dublin & GDA (2 speed economy)

Congestion in GDA likely to continue

Several regions will most likely require greater subsidy in future

The End



www.cso.ie



StatCentral.ie

steve,.macfeely@cso.ie